



Organisation Internationale de Métrologie Légale

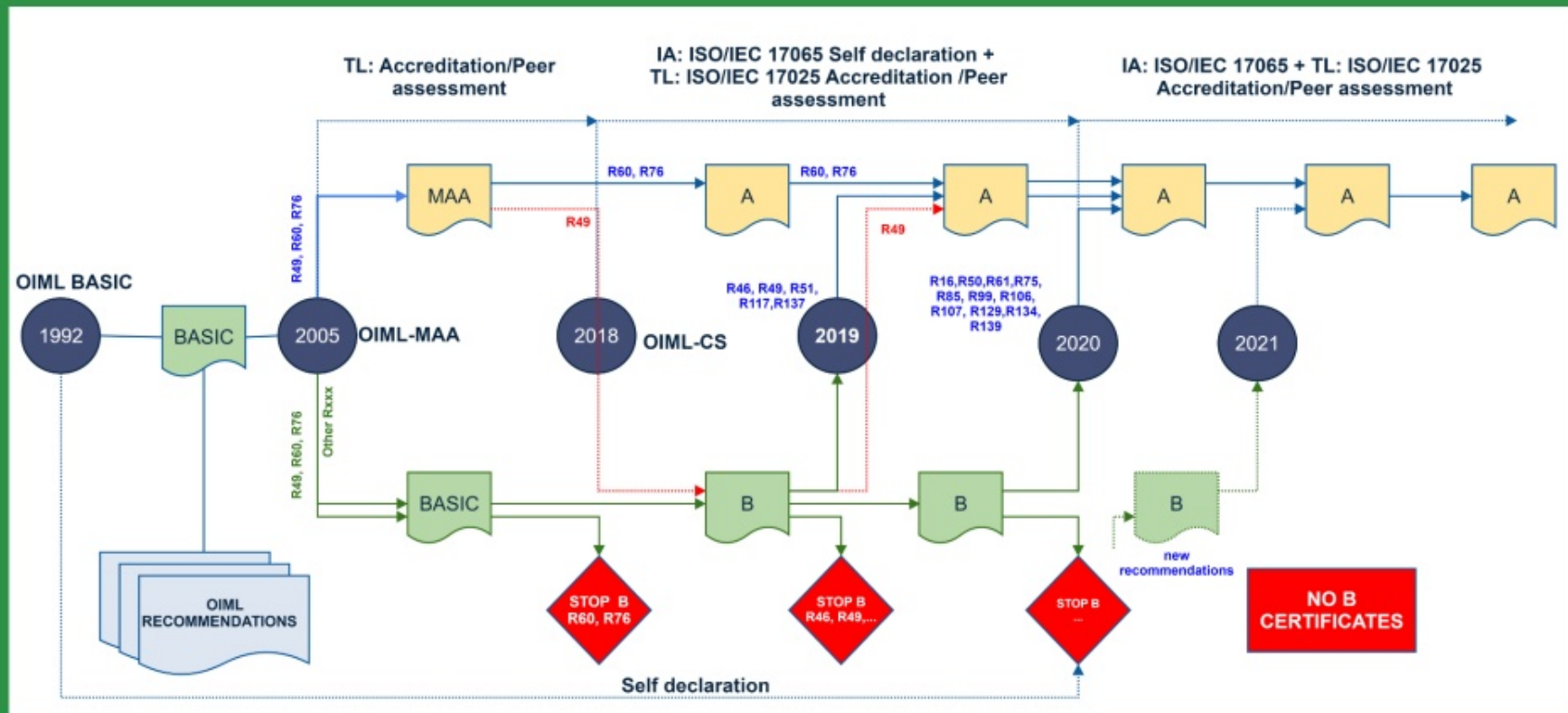
International Organization of Legal Metrology



# OIML Certification System

The OIML-CS is a system for issuing, registering and using **OIML Certificates** and their associated **OIML type evaluation/test reports** for types of measuring instruments, based on the requirements of **OIML Recommendations**.

# Development



# CIML Resolutions towards a new OIML-CS

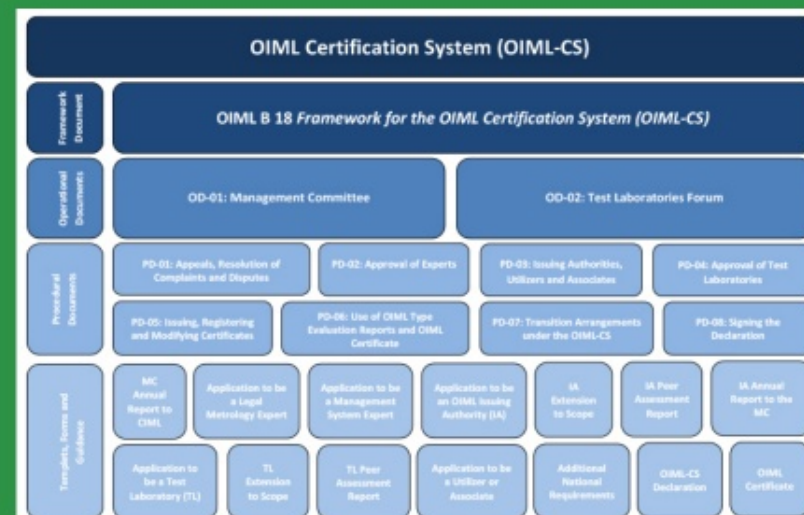
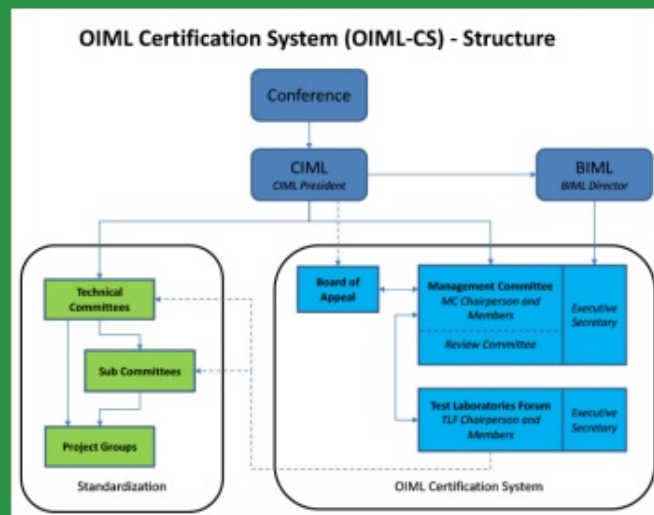
„MAA Resolutions“ approved at the CIML meeting 2013:

- ... to review the structure, rules and procedures
- ... to raise awareness for the various stakeholders
- ... to achieve one single certification system



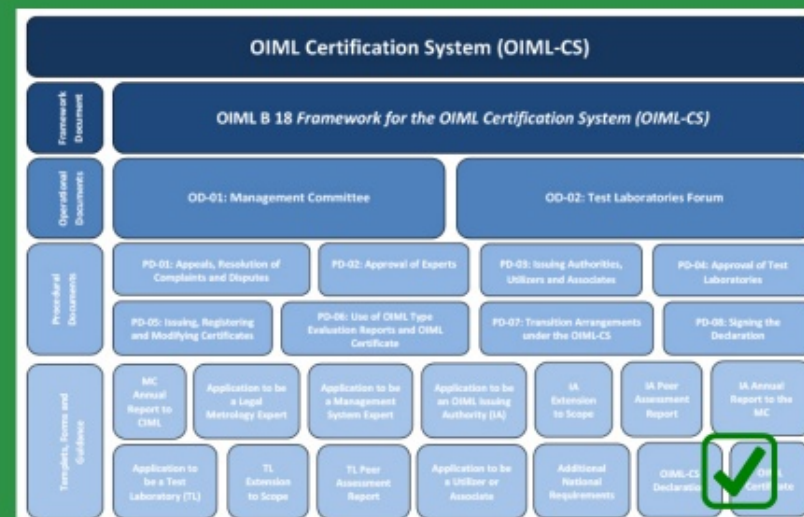
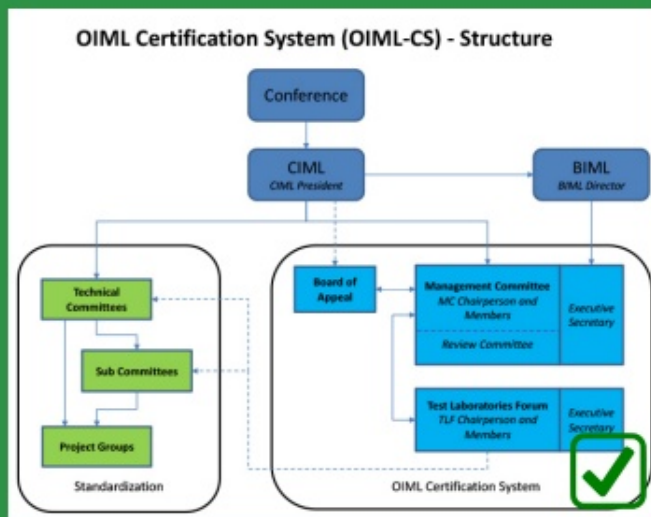
# Structures, rules and policies

- An ad hoc working group prepared the documentation of the OIML-CS and established its structure before 1 January 2018



# Structures, rules and policies

- An ad hoc working group prepared the documentation of the OIML-CS and established its structure before 1 January 2018



# Raise awareness for the various stakeholders

## OIML Issuing Authorities

**CMI (Czech Republic)**  
*CMI Testing Laboratory*  
*Czech Metrology Institute*

**FORCE (Denmark)**  
*FORCE (Brøndby)*  
*FORCE (Horsholm)*  
*FORCE (Vejen)*

**LNE (France)**  
*ITRON*  
*LNE*

**METAS (Switzerland)**  
*METAS*  
*Mettler Toledo*  
*Sartorius*

**NIM (P.R. China)**  
*BJIM*  
*NIM*  
*SIMT*  
*ZJIM*

**NMI (Netherlands)**  
*NMI*

**NMIA (Australia)**  
*NMIA*

**NMIJ/AIST (Japan)**  
*NMIJ/AIST*

**NMO (United Kingdom)**  
*AWTX*  
*NMO*  
*NSF*  
*Sartorius*

**PTB (Germany)**  
*Bizerba*  
*Mettler Toledo*  
*PTB*  
*Sartorius*

**RISE (Sweden)**  
*RISE*

**SLM (Slovakia)**  
*EVPU*  
*SLM*

**Utilizers/Associates:** Australia, Belgium. Cambodia, Canada, Colombia, Cuba, Czech Republic, Denmark, France Germany, India, Japan, Kenya, Kiribati, Korea (R.), Latvia, Namibia, Netherlands, New Zealand, P.R. China, Rwanda, Russian Federation, Saudi Arabia. Slovakia, South Africa, Sweden, Switzerland, Tunisia, United Kingdom, United States Zambia.

# Single Certificate System

The transition from OIML Basic and MAA to OIML-CS went on 1 January 2018 without interruption and certificates were issued from the start under the OIML-CS Scheme A and Scheme B,

**NMI** **OIML Certificate**

OIML Member State  
The Netherlands

Number R60/2000-A-NL1-18-01  
Project number 1901676  
Page 1 of 2

Issuing authority NMI Certin B.V.  
Person responsible: C. Oosterman

Applicant and Manufacturer Curitec Co., Ltd.  
79 Myeong-bong-san-ro, 352  
beong-gil, Gwangju-myeon,  
Paju-si, Gyeonggi-do, 413-855  
South Korea

Identification of the certified type A double ended shear beam load cell, with strain gauges.  
Type : CDSB-...

Characteristics See next page

This OIML Certificate is issued under scheme A.

This Certificate attests the conformity of the above identified Type (represented by the sample(s) identified in the OIML Test Report) with the requirements of the following Recommendation of the International Organization of Legal Metrology (OIML):

**OIML R 60** - Edition 2000 (E) for accuracy class C

This Certificate relates only to the metrological and technical characteristics of the type of measuring instrument covered by the relevant OIML International Recommendation above-identified.  
This Certificate does not bestow any form of legal international approval.

Important note: Apart from the mention of the Certificate's reference number and the name of the OIML Member State in which the Certificate was issued, partial quotation of the Certificate and of the associated OIML Test Report(s) is not permitted, although either may be reproduced in full.

Issuing Authority **NMI Certin B.V., OIML Issuing Authority NL1**  
2 January 2018

C. Oosterman  
Head Certification Board

NMI Certin B.V.  
Rugge de Grootplein 1  
2214 EG Dordrecht  
The Netherlands  
T +31 78 6322332  
certin@nmi.nl  
www.nmi.nl

This document is issued under the provision that no liability is accepted and that the applicant shall indemnify third-party liability.

The notification of NMI Certin B.V. as Issuing Authority can be verified at [www.oiml.org](http://www.oiml.org)

**OIML** **INSPECTION**  
BvA 1 122



# Single Certificate System

The transition from OIML Basic and MAA to OIML-CS went on 1 January 2018 without interruption and certificates were issued from the start under the OIML-CS Scheme A and Scheme B,

**NMI** **OIML Certificate**

**OIML Member State**  
The Netherlands

Number R60/2000-A-NL1-18-01  
Project number 1901676  
Page 1 of 2

Issuing authority: NMI Certin B.V.  
Person responsible: C. Oosterman

Applicant and Manufacturer: Curiolec Co., Ltd.  
79 Myeong-bong-san-ro, 352  
beong-gil, Gwangju-myeon,  
Paju-si, Gyeonggi-do, 413-855  
South Korea

Identification of the certified type: A **double ended shear beam load cell**, with strain gauges.  
Type: CDSB-...

Characteristics: See next page

This OIML Certificate is issued under scheme A 

This Certificate attests the conformity of the above identified Type (represented by the sample(s) identified in the OIML Test Report) with the requirements of the following Recommendation of the International Organization of Legal Metrology (OIML):

**OIML R 60** - Edition 2000 (E) for accuracy class C

This Certificate relates only to the metrological and technical characteristics of the type of measuring instrument covered by the relevant OIML International Recommendation above-identified.  
This Certificate does not bestow any form of legal international approval.

Important note: Apart from the mention of the Certificate's reference number and the name of the OIML Member State in which the Certificate was issued, partial quotation of the Certificate and of the associated OIML Test Report(s) is not permitted, although either may be reproduced in full.

Issuing Authority: **NMI Certin B.V., OIML Issuing Authority NL1**  
2 January 2018

  
C. Oosterman  
Head Certification Board

NMI Certin B.V.  
Rugge de Grootplein 1  
2214 EG Dordrecht  
The Netherlands  
T +31 78 6322332  
certin@nmi.nl  
www.nmi.nl

This document is issued under the provision that no liability is accepted and that the applicant shall indemnify third-party liability.

The notification of NMI Certin B.V. as Issuing Authority can be verified at [www.oiml.org](http://www.oiml.org)



Organisation Internationale de Métrologie Légale

International Organization of Legal Metrology





# **2nd OIML-CS Management Committee Meeting**

Hosted by NMi Certin  
The Netherlands  
20-21 March 2019

**Key  
items**

**Review  
Committee**

**Maintenance  
Group**

**Working  
Groups**



# Feedback and experiences of participants


- Utilizers indicated to make use of OIML Certificates as basis for national type approvals. Colombia indicated that over 100 OIML-CS certificates are accepted.
- Issuing Authorities indicated that there is a need to raise awareness for the accreditation bodies. Delays occur to establish assessment teams.
- Manufacturers associations indicated e.g. concerns regarding acceptance of "old" test data and the availability of suitable test facilities for certain tests.
- Participants requested that the TLF should be more active.

# Review of Participation

Annual progress reports were provided by all Issuing Authorities prior to the meeting. This gave the participants the opportunity to review the work and competence of the Issuing Authorities and Test labs.

No comments from the participants were raised that questioned the compliance of the Issuing Authorities and the MC members agreed to their continued participation in the OIML-CS.

# Review of Participation

Annual progress reports were provided by all Issuing Authorities prior to the meeting. This gave the participants the opportunity to review the work and competence of the Issuing Authorities and Test labs. 

No comments from the participants were raised that questioned the compliance of the Issuing Authorities and the MC members agreed to their continued participation in the OIML-CS.

# Additional National Requirements

The USA introduced the topic that it is not obvious that a IA/TL can perform the test for the ANR and who is responsible for the approval of the IA/TL to do these tests.

It was agreed that the Review Committee is not responsible for the approval of the IA/TL for the test of ANR. A procedure will be developed to request the Utilizers and Associates to specify if they accept the test data from an IA/TL for ANR.



# Use of test results from field-sites

The USA introduced the topic concerning the use of test data of field-sites within the OIML-CS.


After discussion the MC members approved the proposal for the use of test results from field-sites. The Maintenance group will update the OIML-CS documents.

A field-site visit (Gas and Liquid)  
was arranged for the MC members.



# Use of test results from field-sites

The USA introduced the topic concerning the use of test data of field-sites within the OIML-CS.

After discussion the MC members approved the proposal for the use of test results from field-sites. The Maintenance group will update the OIML-CS documents. 

A field-site visit (Gas and Liquid) was arranged for the MC members.



# Approvals

The RC meeting was held in conjunction with the MC on 19 March 2019, chaired by Harry Stolz (Germany). Excellent work is performed by the members of the Review Committee to study and evaluate all provided documentation of IA, TL and Experts.


The MC approved at the meeting the recommendation of 5 additional LME/MSE, the addition of one IA/TL and one extension of a MTL.

The review committee continued its work with the evaluation of applications for IA/TL for these recommendations that moved from scheme B to A. The approval by the MC was done by electronic voting. The evaluations and approvals were performed within the given time frame. By this way the IA/TL could continue their work without interruption.



# Approvals


The RC meeting was held in conjunction with the MC on 19 March 2019, chaired by Harry Stolz (Germany). Excellent work is performed by the members of the Review Committee to study and evaluate all provided documentation of IA, TL and Experts.


The MC approved at the meeting the recommendation of 5 additional LME/MSE, the addition of one IA/TL and one extension of a MTL. 

The review committee continued its work with the evaluation of applications for IA/TL for these recommendations that moved from scheme B to A. The approval by the MC was done by electronic voting. The evaluations and approvals were performed within the given time frame. By this way the IA/TL could continue their work without interruption.

# Approvals

The RC meeting was held in conjunction with the MC on 19 March 2019, chaired by Harry Stolz (Germany). Excellent work is performed by the members of the Review Committee to study and evaluate all provided documentation of IA, TL and Experts.

The MC approved at the meeting the recommendation of 5 additional LME/MSE, the addition of one IA/TL and one extension of a MTL. 

The review committee continued its work with the evaluation of applications for IA/TL for these recommendations that moved from scheme B to A. The approval by the MC was done by electronic voting. The evaluations and approvals were performed within the given time frame. By this way the IA/TL could continue their work without interruption. 

# Results

The MG meeting was held in conjunction with the MC on 19 March 2019, chaired by Bill Loizides (Australia). Excellent work is done to keep the system up-to-date.

The MG discussed the use of test data of field-sites, the interpretation of the use of test-data of a TL of another IA, the MC participation in revisions projects of Recommendations and the interpretation of OIML-CS documents.


- The members will give their positions for the use of the test data of a TL registered under another IA.
- The MC approved the proposal to participate in the process for projects to revise OIML Recommendations
- The MG/ES drafted a WD2 on clarification / interpretation documents (avoiding regular updates of B18)



# Results

The MG meeting was held in conjunction with the MC on 19 March 2019, chaired by Bill Loizides (Australia). Excellent work is done to keep the system up-to-date.

The MG discussed the use of test data of field-sites, the interpretation of the use of test-data of a TL of another IA, the MC participation in revisions projects of Recommendations and the interpretation of OIML-CS documents.

- The members will give their positions for the use of the test data of a TL registered under another IA.
- The MC approved the proposal to participate in the process for projects to revise OIML Recommendations 
- The MG/ES drafted a WD2 on clarification / interpretation documents (avoiding regular updates of B18)

# WG 17065


The WG meeting was held in conjunction with the MC on 19 March 2019, chaired by Alex Winchester (Australia).

It was agreed that the WG would develop proposals on alternative approaches to the ISO/IEC 17065 for consideration for the MC in 2020 (e.g. ISO/IEC 17020). The MC agreed to extend the transition deadline for the IAs to demonstrate compliance with ISO/IEC 17065 through self-declaration to provide the WG (and IA) with time to develop their proposals.

# R60 Gap analyses

The WG submitted a draft of gap analysis for the revision of OIML R60. IA/TL used this to extend successfully their scope for the OIML R60:2017.

# R60 Gap analyses

The WG submitted a draft of gap analysis for the revision of OIML R60. IA/TL used this to extend successfully their scope for the OIML R60:2017. 



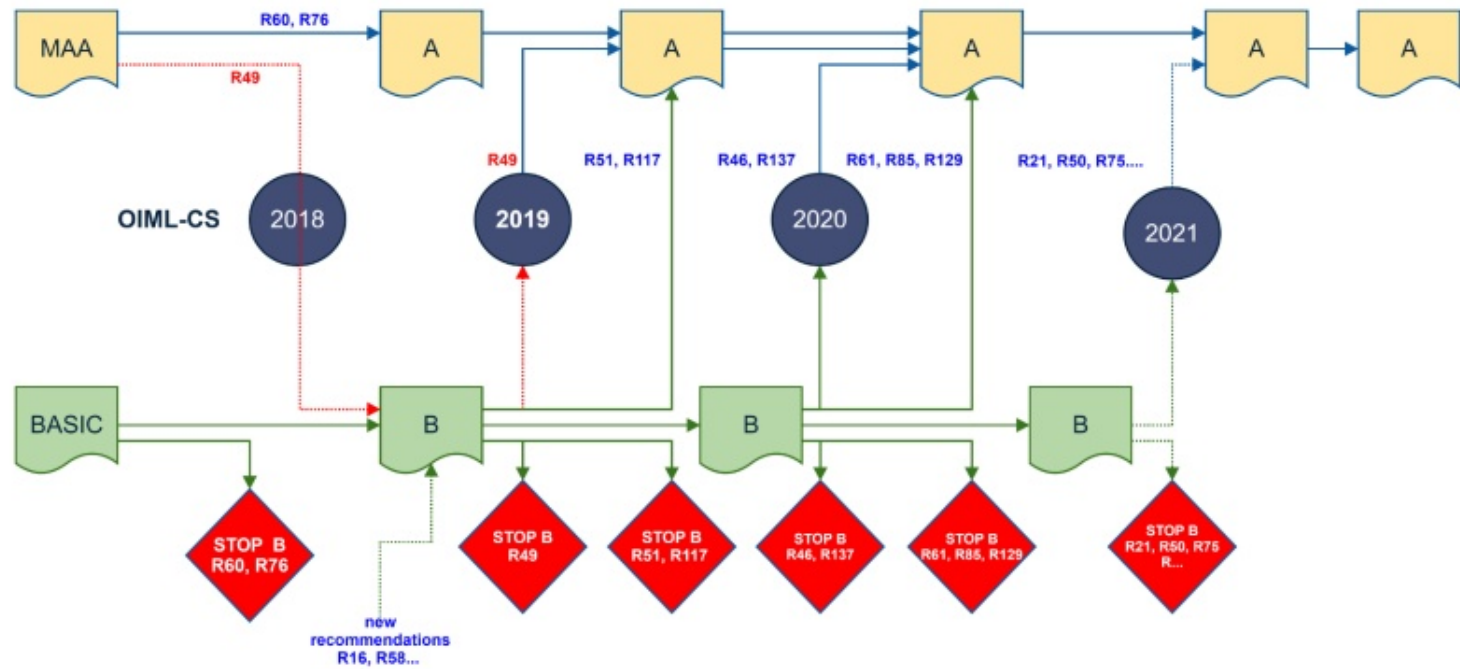


Organisation Internationale de Métrologie Légale

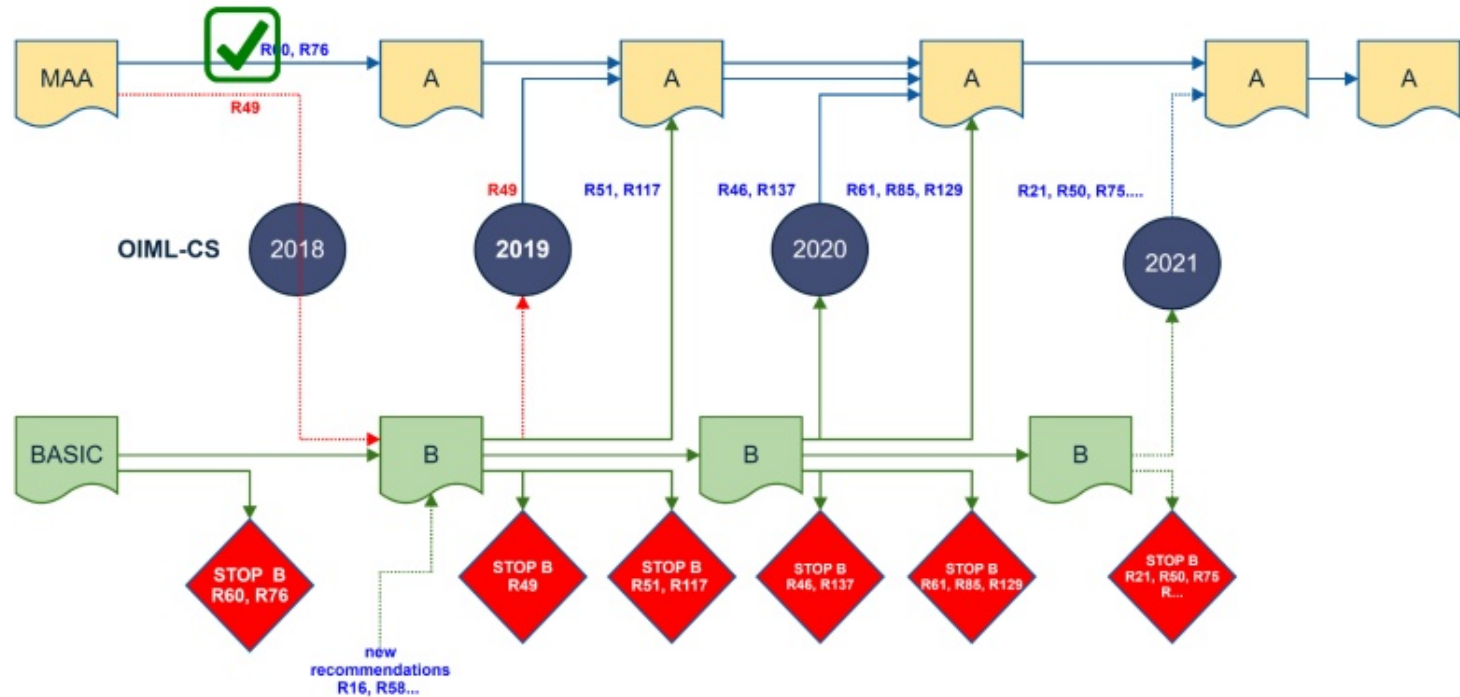
International Organization of Legal Metrology



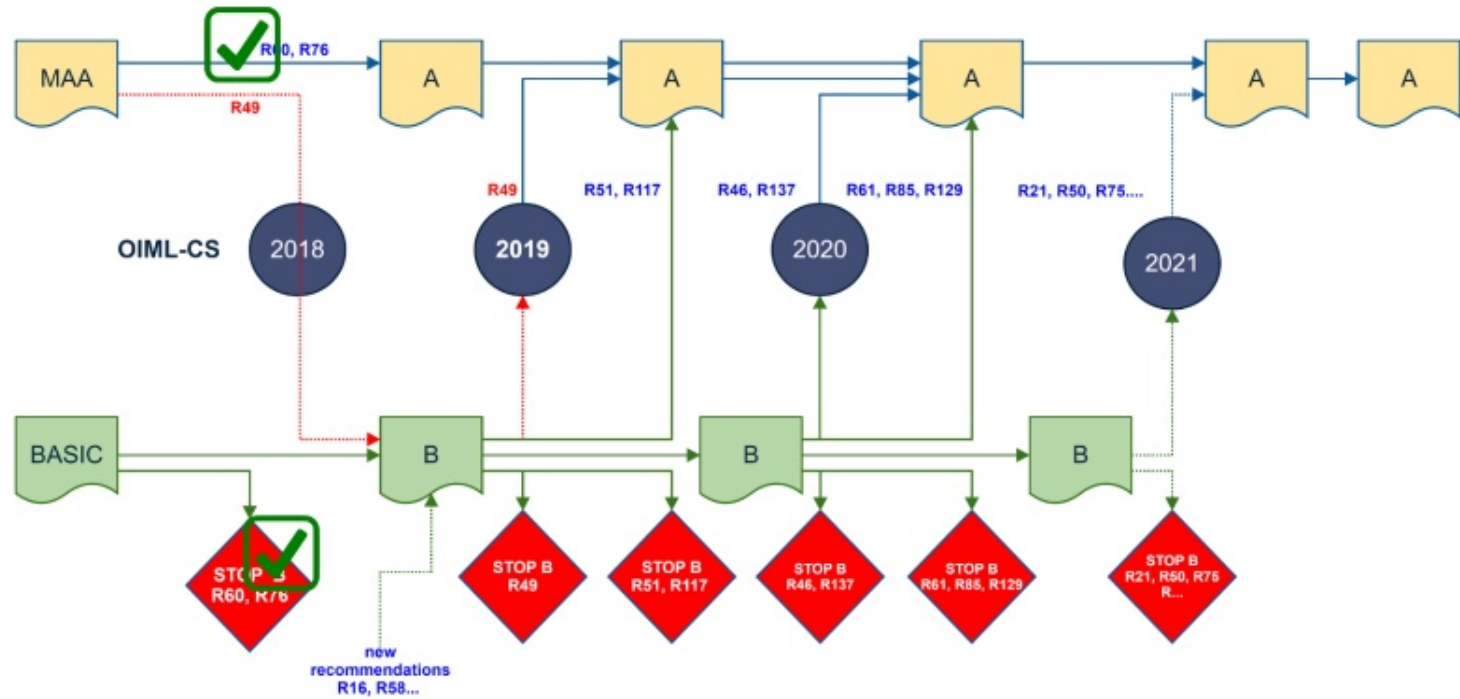
# Transition of IA/TL to scheme A



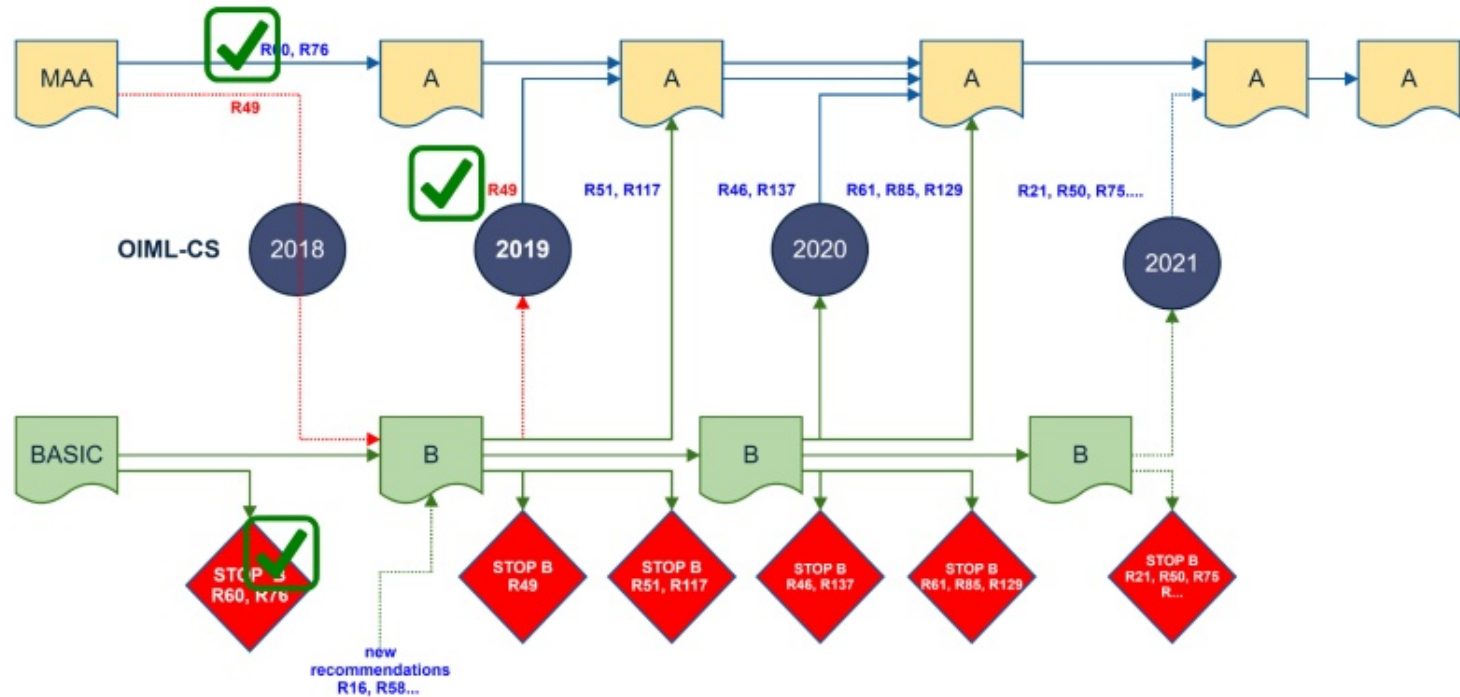
# Transition of IA/TL to scheme A



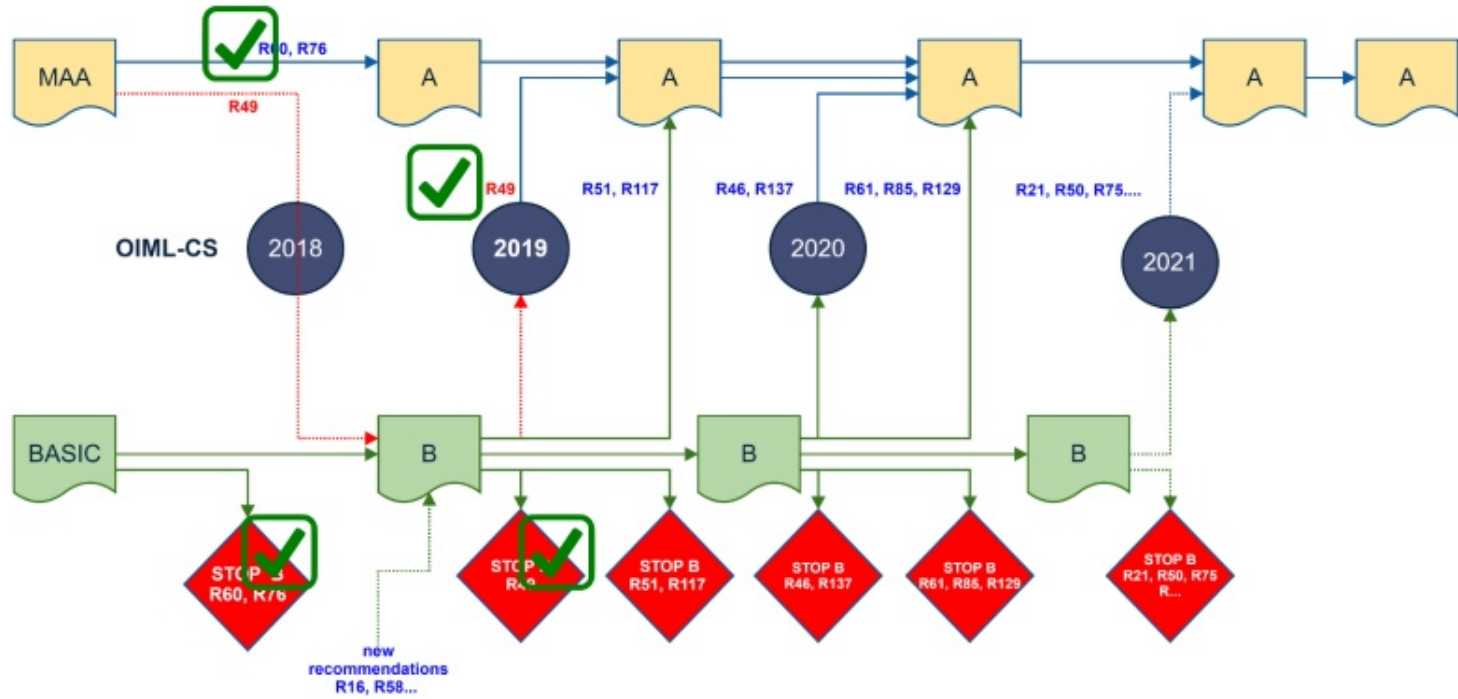
# Transition of IA/TL to scheme A



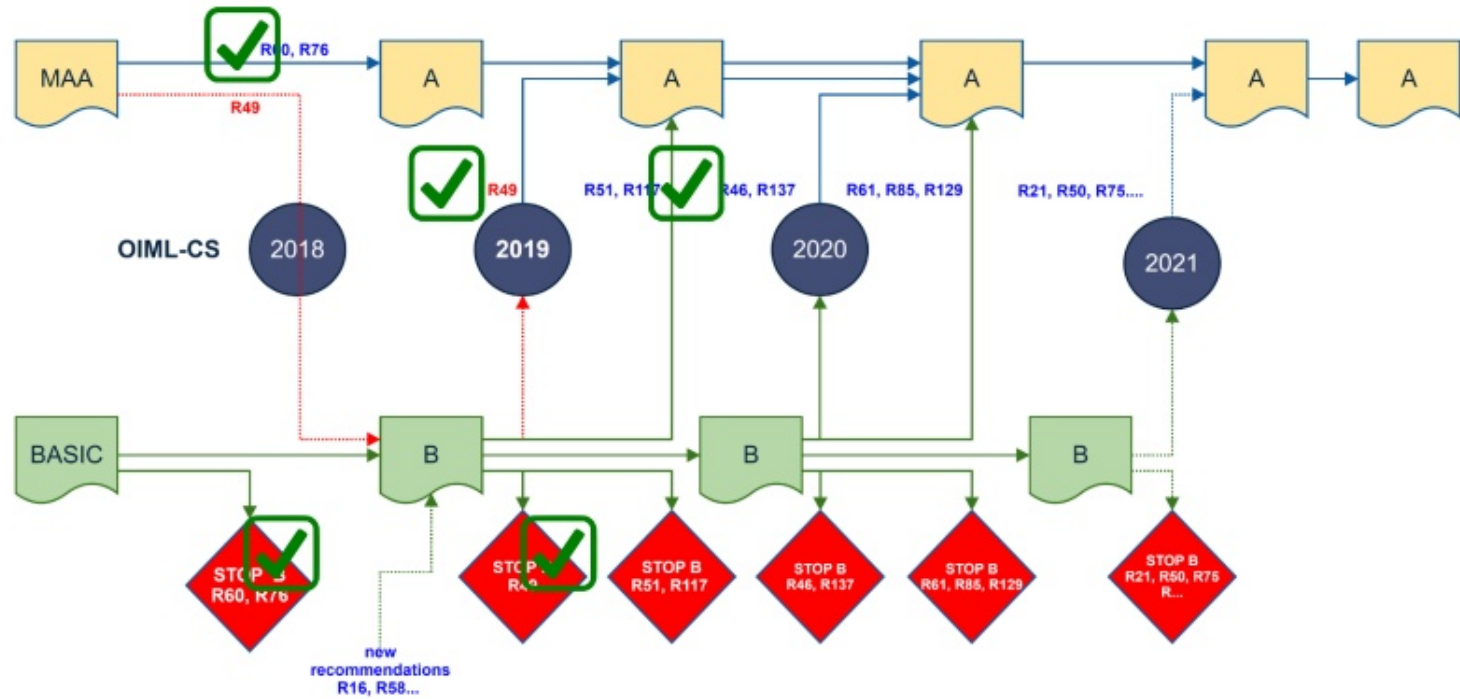
# Transition of IA/TL to scheme A



# Transition of IA/TL to scheme A

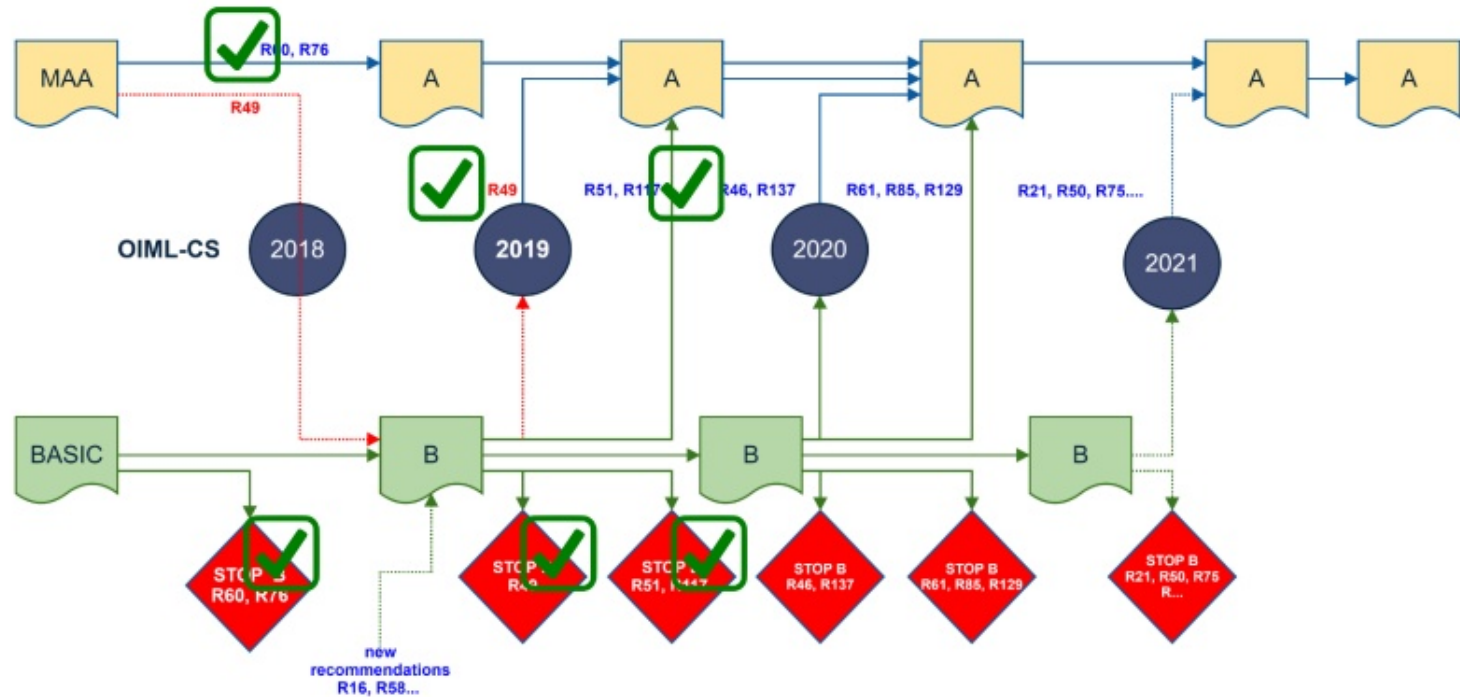


# Transition of IA/TL to scheme A





# Transition of IA/TL to scheme A



# Actions

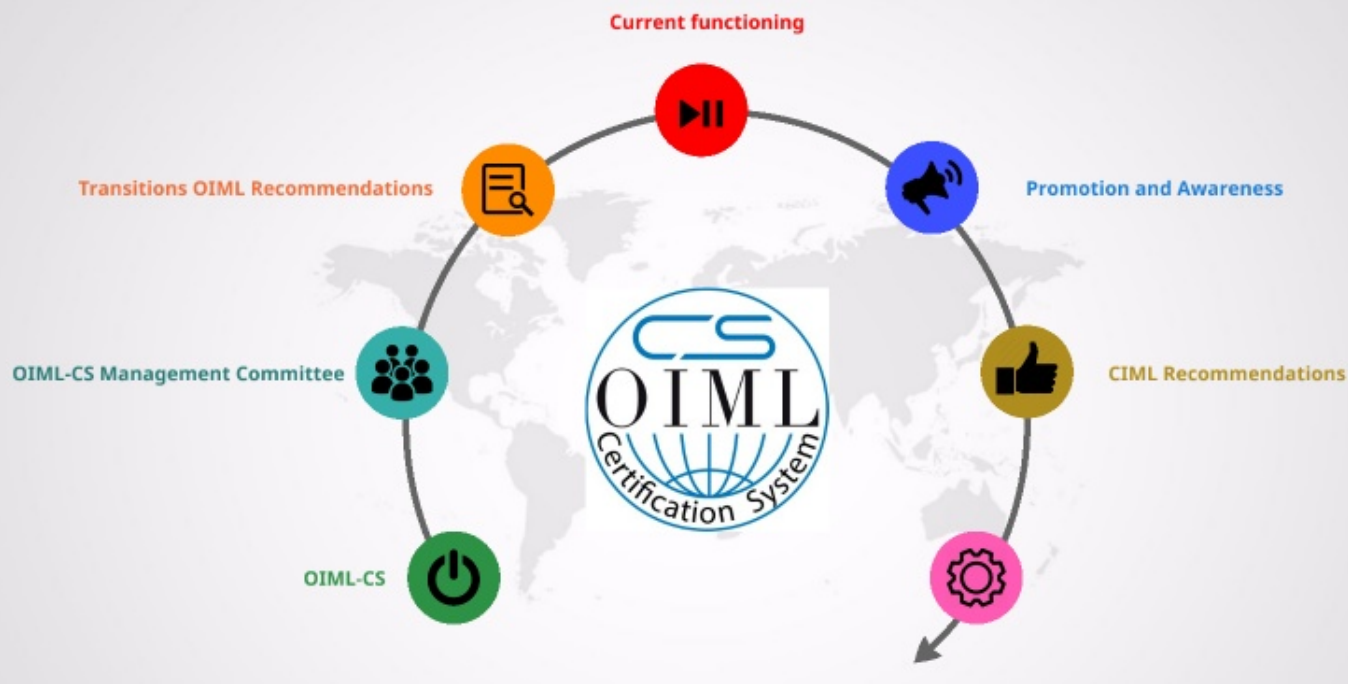
Develop the gap-analyzes for revised recommendations (e.g. R117) and to develop the Capacity Annex for the application forms to shift from scheme B to A.

With the transition to scheme A there is also the need of experts for these fields in order to perform timely assessments (availability of experts, reporting time, RC review time and MC approval). Member states are invited to invite experts in their country to subscribe as LME/MSE.



Organisation Internationale de Métrologie Légale

International Organization of Legal Metrology





The diagram features a large red circle on the left containing the title. To its right, four teal circles are arranged vertically, each containing a step of the process. The background is a light gray world map.

# Operation

of OIML certification system

Certificates

Transitions to  
scheme A

Review  
Accreditation vs  
Peer

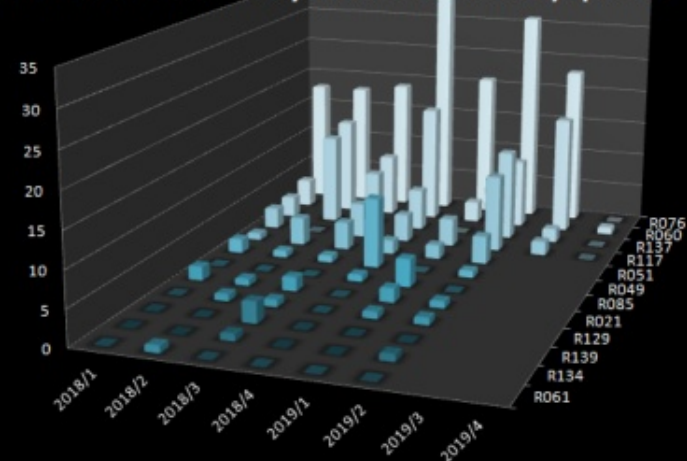
Conformity  
to  
Type

# Registered OIML Certificates Q3/2019

**Certificates (including Revisions)  
2018-2019**



**2018- 2019 Certificates by Recommendation / quarter**



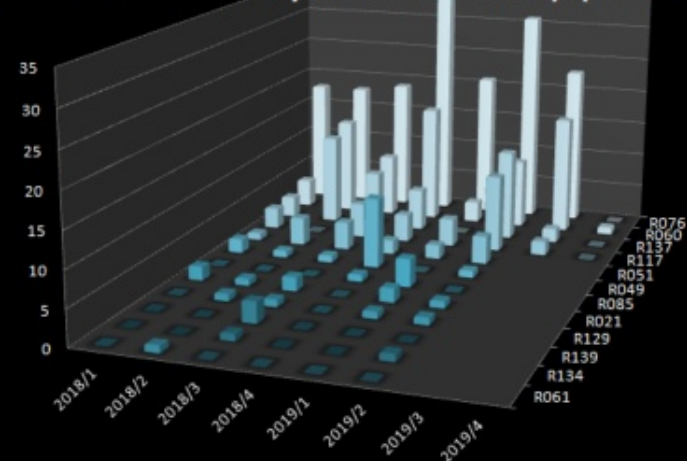


# Registered OIML Certificates Q3/2019

**Certificates (including Revisions)  
2018-2019**



**2018- 2019 Certificates by Recommendation / quarter**



# Transition of IA/TL to scheme A

		R 21:2007	R 46:2012	R 49:2006	R 49:2013	R 50:2014	R 51:2006	R 60:2000	R 60:2017	R 61:2004	R 61:2017	R 75:2002	R 76:1992	R 76:2006	R 85:2008	R 99:2008	R 106:2011	R 107:2007	R 117:1995	R 117:2007	R 126:1998	R 129:2000	R 134:2006	R 137:2012	R 139:2014	R 139:2018
AU1	National Measurement Institute Australia (NMI/A)					■							■	■												
CH1	Federal Institute of Metrology (METAS)		■			■		■		■				■			■	■			■		■			
CN2	National Institute of Metrology, China (NIM)		■			■	■	■	■	■	■		■	■				■					■	■		
CZ1	Czech Metrology Institute (CMI)				■							■		■	■									■	■	
DE1	Physikalisch-Technische Bundesanstalt (PTB)							■				■		■												
DK2	FORCE Certification A/S					■				■				■			■	■				■	■	■		
FR2	Laboratoire National de Métrologie et d'Essais (LNE)					■		■						■						■						
GB1	NMO	■				■		■		■			■	■	■		■	■				■	■			
JP1	NMIJ/AIST							■					■	■												
NL1	NMI Certin B.V.	■	■	■	■	■	■	■	■	■	■	■	■	■	■	■	■	■	■	■	■	■	■	■	■	■
SE1	Research Institutes of Sweden (RISE)							■	■	■				■	■											
SK1	Slovak Legal Metrology (SLM)			■	■									■												

# Transition of IA/TL to scheme A

		R 21:2007	R 46:2012	R 49:2006	R 49:2013	R 50:2014	R 51:2006	R 60:2000	R 60:2017	R 61:2004	R 61:2017	R 75:2002	R 76:1992	R 76:2006	R 85:2008	R 99:2008	R 106:2011	R 107:2007	R 117:1995	R 117:2007	R 126:1998	R 129:2000	R 134:2006	R 137:2012	R 139:2014	R 139:2018
AU1	National Measurement Institute Australia (NMI/A)					■							■	■												
CH1	Federal Institute of Metrology (METAS)		■			■		■		■				■			■	■			■		■			
CN2	National Institute of Metrology, China (NIM)		■			■	■	■	■	■	■		■	■				■					■	■		
CZ1	Czech Metrology Institute (CMI)				■							■		■	■									■	■	
DE1	Physikalisch-Technische Bundesanstalt (PTB)							■				■		■												
DK2	FORCE Certification A/S					■				■				■			■	■				■	■	■		
FR2	Laboratoire National de Métrologie et d'Essais (LNE)					■		■						■						■						
GB1	NMO	■				■		■		■			■	■	■		■	■				■	■			
JP1	NMIJ/AIST							■					■	■												
NL1	NMI Certin B.V.	■	■	■	■	■	■	■	■	■	■	■	■	■	■	■	■	■	■	■	■	■	■	■	■	■
SE1	Research Institutes of Sweden (RISE)							■	■	■				■	■											
SK1	Slovak Legal Metrology (SLM)			■	■									■												

# Transition of IA/TL to scheme A

		R 21:2007	R 46:2012	R 49:2006	R 49:2013	R 50:2014	R 51:2006	R 60:2000	R 60:2017	R 61:2004	R 61:2017	R 75:2002	R 76:1992	R 76:2006	R 85:2008	R 99:2008	R 106:2011	R 107:2007	R 117:1995	R 117:2007	R 126:1998	R 129:2000	R 134:2006	R 137:2012	R 139:2014	R 139:2018
AU1	National Measurement Institute Australia (NMI/A)					■							■	■												
CH1	Federal Institute of Metrology (METAS)		■			■		■		■			■	■			■	■			■		■			
CN2	National Institute of Metrology, China (NIM)		■			■	■	■	■	■	■		■	■				■					■	■		
CZ1	Czech Metrology Institute (CMI)				■							■	■	■	■									■	■	
DE1	Physikalisch-Technische Bundesanstalt (PTB)							■				■	■	■												
DK2	FORCE Certification A/S					■				■			■	■			■	■				■	■	■		
FR2	Laboratoire National de Métrologie et d'Essais (LNE)					■		■					■	■						■						
GB1	NMO	■				■		■		■			■	■	■		■	■				■	■			
JP1	NMIJ/AIST							■					■	■												
NL1	NMI Certin B.V.	■	■	■	■	■	■	■	■	■	■	■	■	■	■	■	■	■	■	■	■	■	■	■	■	■
SE1	Research Institutes of Sweden (RISE)							■	■	■			■	■	■											
SK1	Slovak Legal Metrology (SLM)			■	■								■	■												

# Transition of IA/TL to scheme A

		R 21:2007	R 46:2012	R 49:2006	R 49:2013	R 50:2014	R 51:2006	R 60:2000	R 60:2017	R 61:2004	R 61:2017	R 75:2002	R 76:1992	R 76:2006	R 85:2008	R 99:2008	R 106:2011	R 107:2007	R 117:1995	R 117:2007	R 126:1998	R 129:2000	R 134:2006	R 137:2012	R 139:2014	R 139:2018
AU1	National Measurement Institute Australia (NMI/A)					■							■	■												
CH1	Federal Institute of Metrology (METAS)		■			■		■		■			■	■			■	■			■		■			
CN2	National Institute of Metrology, China (NIM)		■			■	■	■	■	■	■		■	■				■					■	■		
CZ1	Czech Metrology Institute (CMI)				■							■	■	■	■									■	■	
DE1	Physikalisch-Technische Bundesanstalt (PTB)							■				■	■	■												
DK2	FORCE Certification A/S					■				■			■	■			■	■				■	■	■		
FR2	Laboratoire National de Métrologie et d'Essais (LNE)					■		■					■	■						■						
GB1	NMO	■				■		■		■			■	■	■		■	■				■	■			
JP1	NMIJ/AIST							■					■	■												
NL1	NMI Certin B.V.	■	■	■	■	■	■	■	■	■	■	■	■	■	■	■	■	■	■	■	■	■	■	■	■	■
SE1	Research Institutes of Sweden (RISE)							■	■	■			■	■	■											
SK1	Slovak Legal Metrology (SLM)			■	■								■	■												



# Transition of IA/TL to scheme A

		R 21:2007	R 46:2012	R 49:2006	R 49:2013	R 50:2014	R 51:2006	R 60:2000	R 60:2017	R 61:2004	R 61:2017	R 75:2002	R 76:1992	R 76:2006	R 85:2008	R 99:2008	R 106:2011	R 107:2007	R 117:1995	R 117:2007	R 126:1998	R 129:2000	R 134:2006	R 137:2012	R 139:2014	R 139:2018
AU1	National Measurement Institute Australia (NMI/A)					■							■	■												
CH1	Federal Institute of Metrology (METAS)		■			■		■		■				■			■				■		■			
CN2	National Institute of Metrology, China (NIM)		■			■	■	■	■	■	■		■	■				■					■	■		
CZ1	Czech Metrology Institute (CMI)				■							■		■	■									■	■	
DE1	Physikalisch-Technische Bundesanstalt (PTB)							■				■		■												
DK2	FORCE Certification A/S					■				■				■			■	■				■	■	■		
FR2	Laboratoire National de Métrologie et d'Essais (LNE)					■		■						■						■						
GB1	NMO	■				■		■		■			■	■	■		■	■				■	■			
JP1	NMIJ/AIST							■					■	■												
NL1	NMI Certin B.V.	■	■	■	■	■	■	■	■	■	■	■	■	■	■	■	■	■	■	■	■	■	■	■	■	■
SE1	Research Institutes of Sweden (RISE)							■	■	■				■												
SK1	Slovak Legal Metrology (SLM)			■	■									■												

# Transition of IA/TL to scheme A

		R 21:2007	R 46:2012	R 49:2006	R 49:2013	R 50:2014	R 51:2006	R 60:2000	R 60:2017	R 61:2004	R 61:2017	R 75:2002	R 76:1992	R 76:2006	R 85:2008	R 99:2008	R 106:2011	R 107:2007	R 117:1995	R 117:2007	R 126:1998	R 129:2000	R 134:2006	R 137:2012	R 139:2014	R 139:2018
AU1	National Measurement Institute Australia (NMI/A)					■							■	■												
CH1	Federal Institute of Metrology (METAS)		■			■		■		■				■			■				■		■			
CN2	National Institute of Metrology, China (NIM)		■			■	■	■	■	■	■		■	■				■					■	■		
CZ1	Czech Metrology Institute (CMI)				■							■		■	■									■	■	
DE1	Physikalisch-Technische Bundesanstalt (PTB)							■				■		■												
DK2	FORCE Certification A/S					■				■				■			■	■				■	■	■		
FR2	Laboratoire National de Métrologie et d'Essais (LNE)					■	■						■	■							■					
GB1	NMO	■				■		■		■			■	■	■		■	■				■	■			
JP1	NMIJ/AIST						■						■	■												
NL1	NMI Certin B.V.	■	■	■	■	■	■	■	■	■	■	■	■	■	■	■	■	■	■	■	■	■	■	■	■	■
SE1	Research Institutes of Sweden (RISE)						■		■	■				■												
SK1	Slovak Legal Metrology (SLM)			■	■									■												

# Transition of IA/TL to scheme A

		R 21:2007	R 46:2012	R 49:2006	R 49:2013	R 50:2014	R 51:2006	R 60:2000	R 60:2017	R 61:2004	R 61:2017	R 75:2002	R 76:1992	R 76:2006	R 85:2008	R 99:2008	R 106:2011	R 107:2007	R 117:1995	R 117:2007	R 126:1998	R 129:2000	R 134:2006	R 137:2012	R 139:2014	R 139:2018
AU1	National Measurement Institute Australia (NMI/A)					■							■	■												
CH1	Federal Institute of Metrology (METAS)		■			■	■	■		■			■	■			■	■			■		■			
CN2	National Institute of Metrology, China (NIM)		■			■	■	■	■	■	■		■	■				■					■	■		
CZ1	Czech Metrology Institute (CMI)				■							■		■	■									■	■	
DE1	Physikalisch-Technische Bundesanstalt (PTB)						■					■		■												
DK2	FORCE Certification A/S					■				■				■			■	■				■	■	■		
FR2	Laboratoire National de Métrologie et d'Essais (LNE)					■	■						■	■							■					
GB1	NMO	■				■	■	■		■			■	■	■		■	■				■	■			
JP1	NMIJ/AIST						■						■	■												
NL1	NMI Certin B.V.	■	■	■	■	■	■	■	■	■	■	■	■	■	■	■	■	■	■	■	■	■	■	■	■	■
SE1	Research Institutes of Sweden (RISE)						■	■	■	■				■												
SK1	Slovak Legal Metrology (SLM)			■	■									■												

# Transition of IA/TL to scheme A

		R 21:2007	R 46:2012	R 49:2006	R 49:2013	R 50:2014	R 51:2006	R 60:2000	R 60:2017	R 61:2004	R 61:2017	R 75:2002	R 76:1992	R 76:2006	R 85:2008	R 99:2008	R 106:2011	R 107:2007	R 117:1995	R 117:2007	R 126:1998	R 129:2000	R 134:2006	R 137:2012	R 139:2014	R 139:2018
AU1	National Measurement Institute Australia (NMI/A)					■							■	■												
CH1	Federal Institute of Metrology (METAS)		■			■	■	■		■			■	■			■	■			■		■			
CN2	National Institute of Metrology, China (NIM)		■			■	■	■	■	■	■		■	■				■					■	■		
CZ1	Czech Metrology Institute (CMI)				■							■		■	■									■	■	
DE1	Physikalisch-Technische Bundesanstalt (PTB)						■					■		■												
DK2	FORCE Certification A/S					■				■				■			■	■				■	■	■		
FR2	Laboratoire National de Métrologie et d'Essais (LNE)					■	■						■	■							■					
GB1	NMO	■				■	■	■		■			■	■	■		■	■				■	■			
JP1	NMIJ/AIST						■						■	■												
NL1	NMI Certin B.V.	■	■	■	■	■	■	■	■	■	■	■	■	■	■	■	■	■	■	■	■	■	■	■	■	■
SE1	Research Institutes of Sweden (RISE)						■	■	■	■				■												
SK1	Slovak Legal Metrology (SLM)			■	■									■												

# Transition of IA/TL to scheme A

		R 21:2007	R 46:2012	R 49:2006	R 49:2013	R 50:2014	R 51:2006	R 60:2000	R 60:2017	R 61:2004	R 61:2017	R 75:2002	R 76:1992	R 76:2006	R 85:2008	R 99:2008	R 106:2011	R 107:2007	R 117:1995	R 117:2007	R 126:1998	R 129:2000	R 134:2006	R 137:2012	R 139:2014	R 139:2018
AU1	National Measurement Institute Australia (NMI/A)					■							■	■												
CH1	Federal Institute of Metrology (METAS)		■			■	■	■		■			■	■			■	■			■		■			
CN2	National Institute of Metrology, China (NIM)		■			■	■	■	■	■	■		■	■				■					■	■		
CZ1	Czech Metrology Institute (CMI)				■							■		■	■									■	■	
DE1	Physikalisch-Technische Bundesanstalt (PTB)						■					■		■												
DK2	FORCE Certification A/S					■				■				■			■	■				■	■	■		
FR2	Laboratoire National de Métrologie et d'Essais (LNE)					■	■						■	■							■					
GB1	NMO	■				■	■	■		■			■	■	■		■	■				■	■			
JP1	NMIJ/AIST						■						■	■												
NL1	NMI Certin B.V.	■	■	■	■	■	■	■	■	■	■	■	■	■	■	■	■	■	■	■	■	■	■	■	■	■
SE1	Research Institutes of Sweden (RISE)						■	■	■	■				■												
SK1	Slovak Legal Metrology (SLM)			■	■									■												

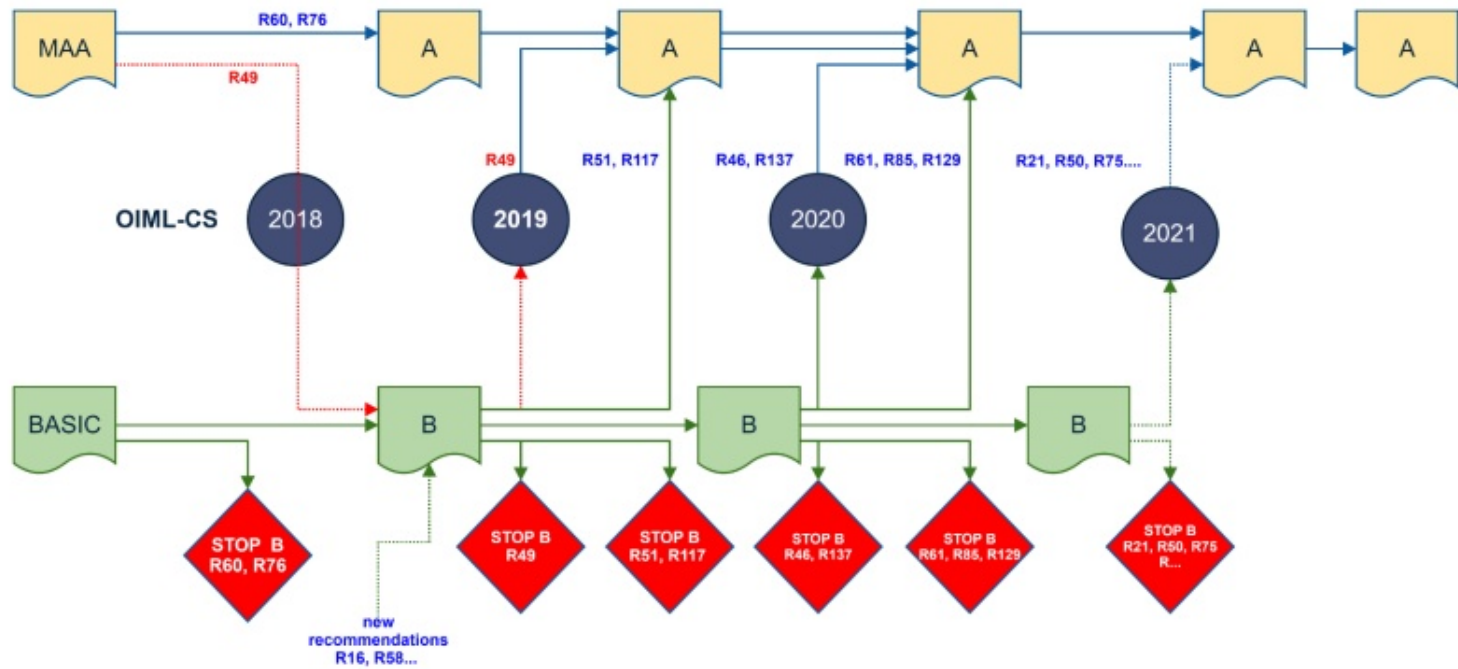




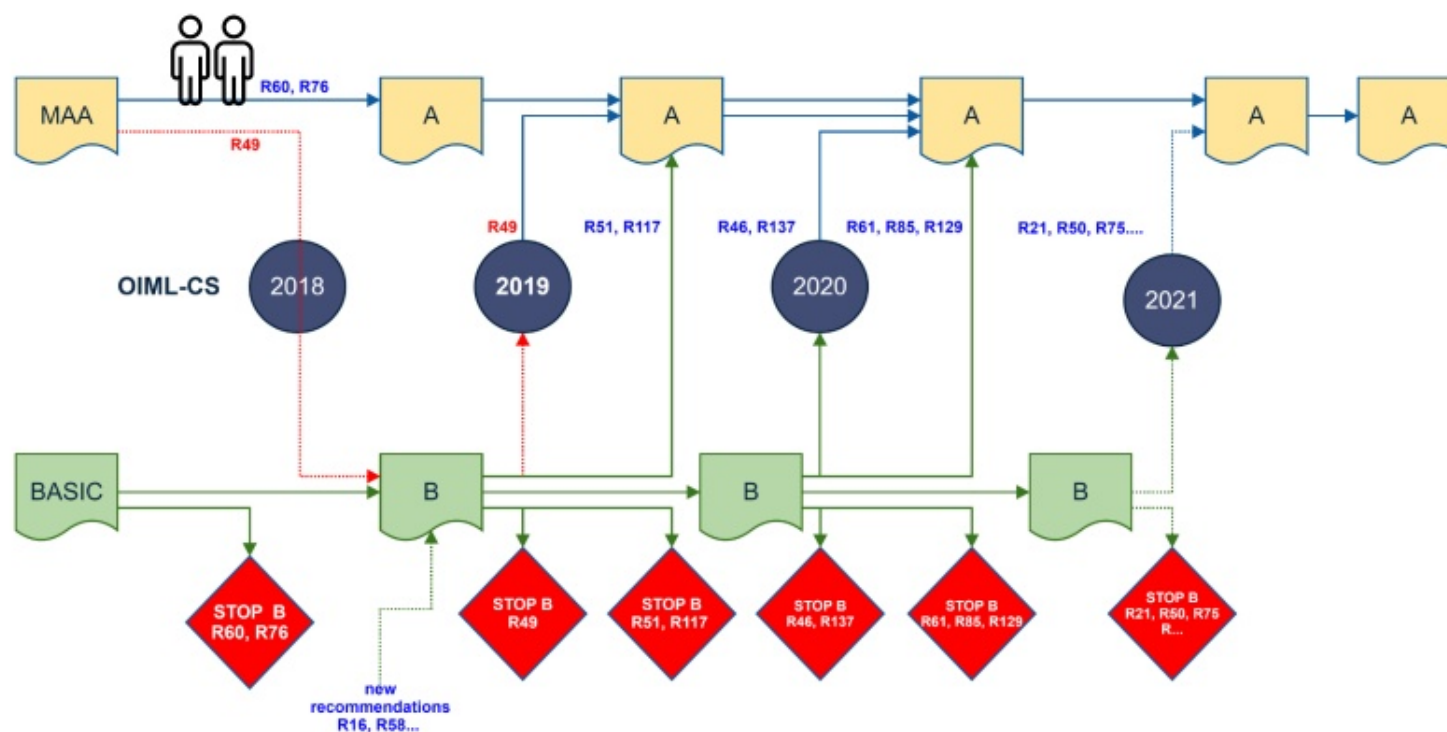
# Accreditation vs Peer assessment

It has been discussed at the MC that there are differences in the process of assessment between accreditation and peer assessment. Where the accreditation bodies are assessed annually, peer assessment take place once in the 4 years. The approach of Peer assessment is continued from the MAA system and differ from other certification schemes.

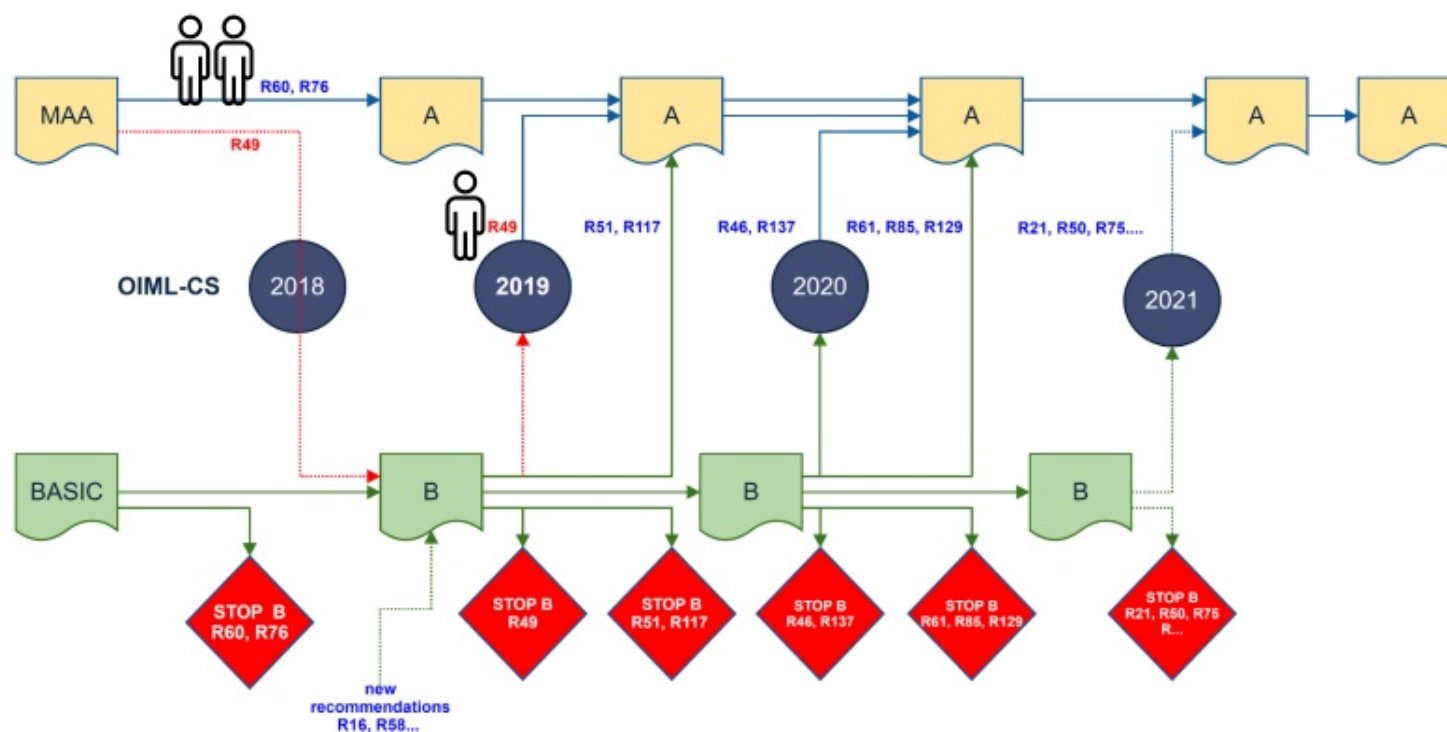
## Involvement of Legal Metrology Experts



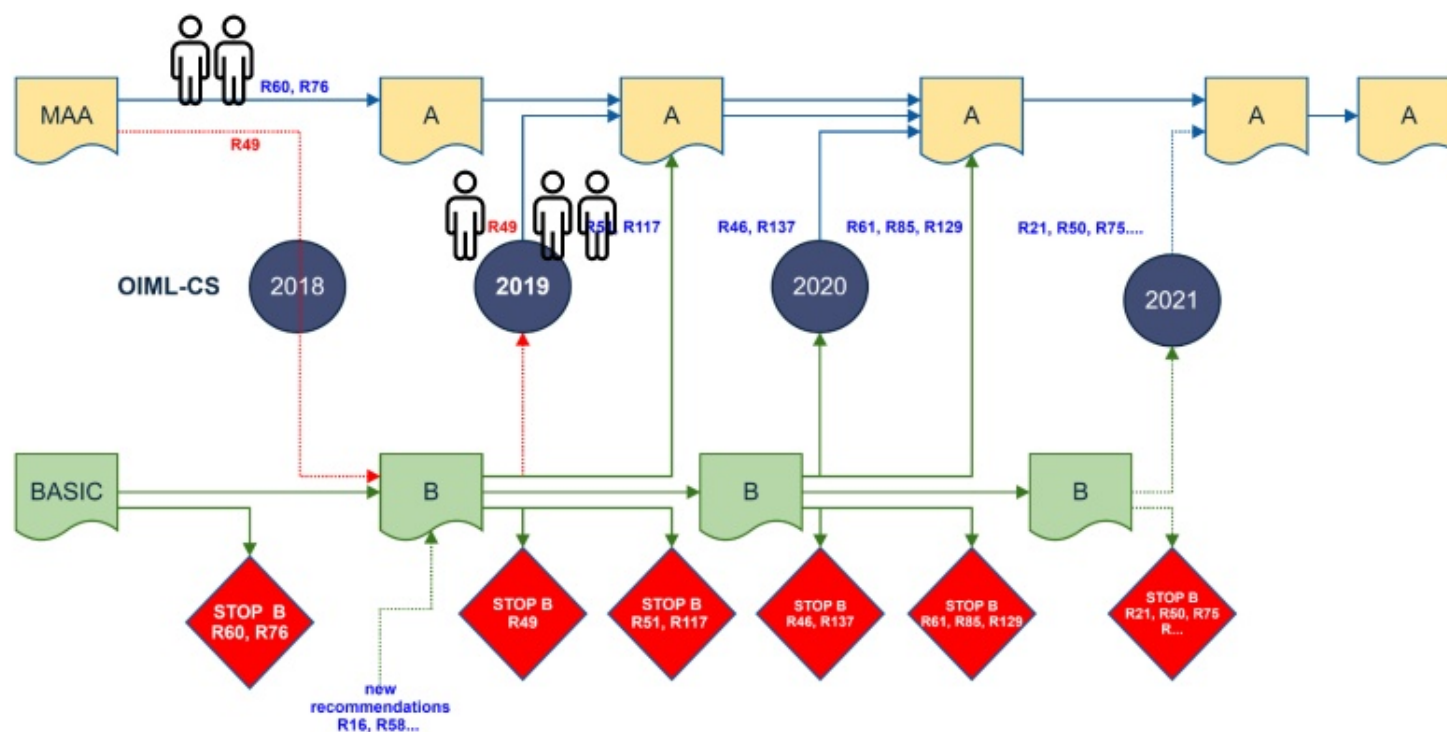
# Involvement of Legal Metrology Experts



# Involvement of Legal Metrology Experts

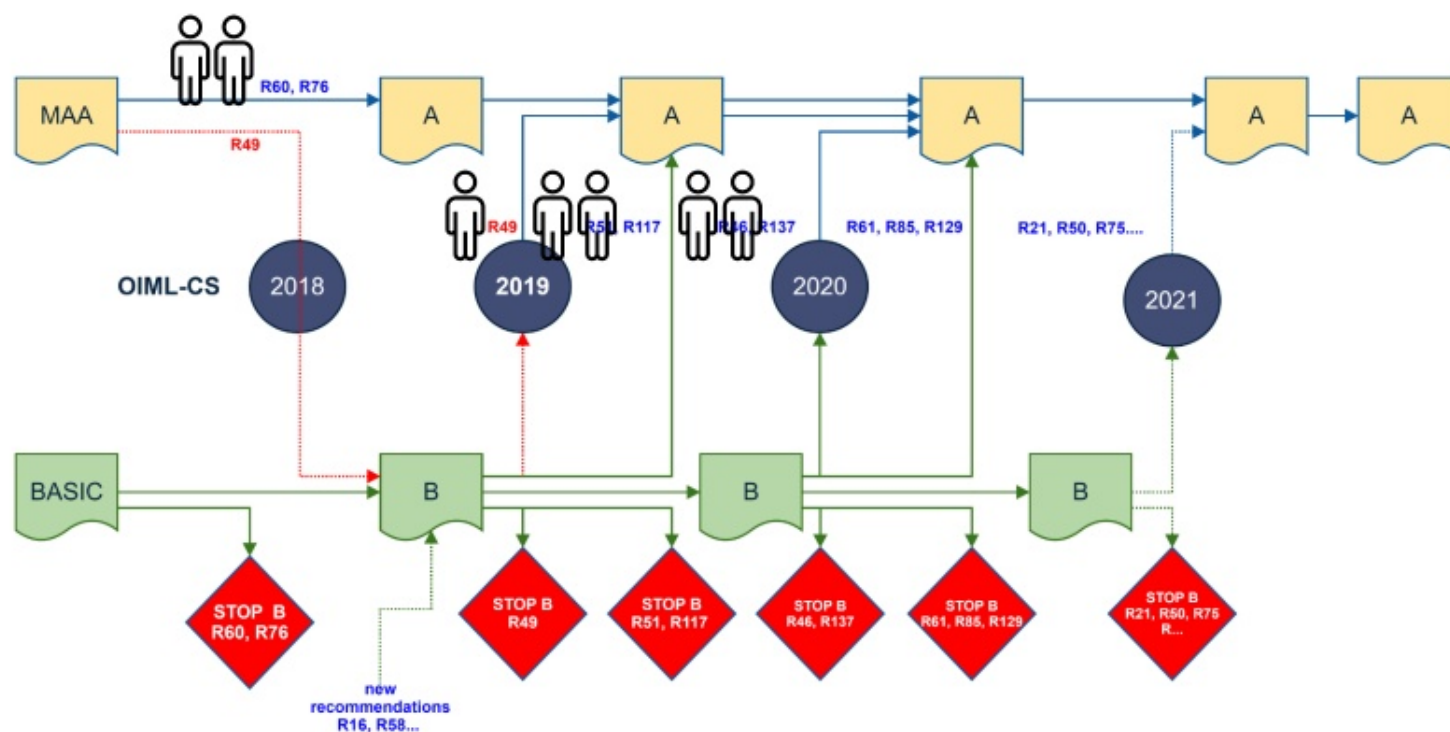


# Involvement of Legal Metrology Experts

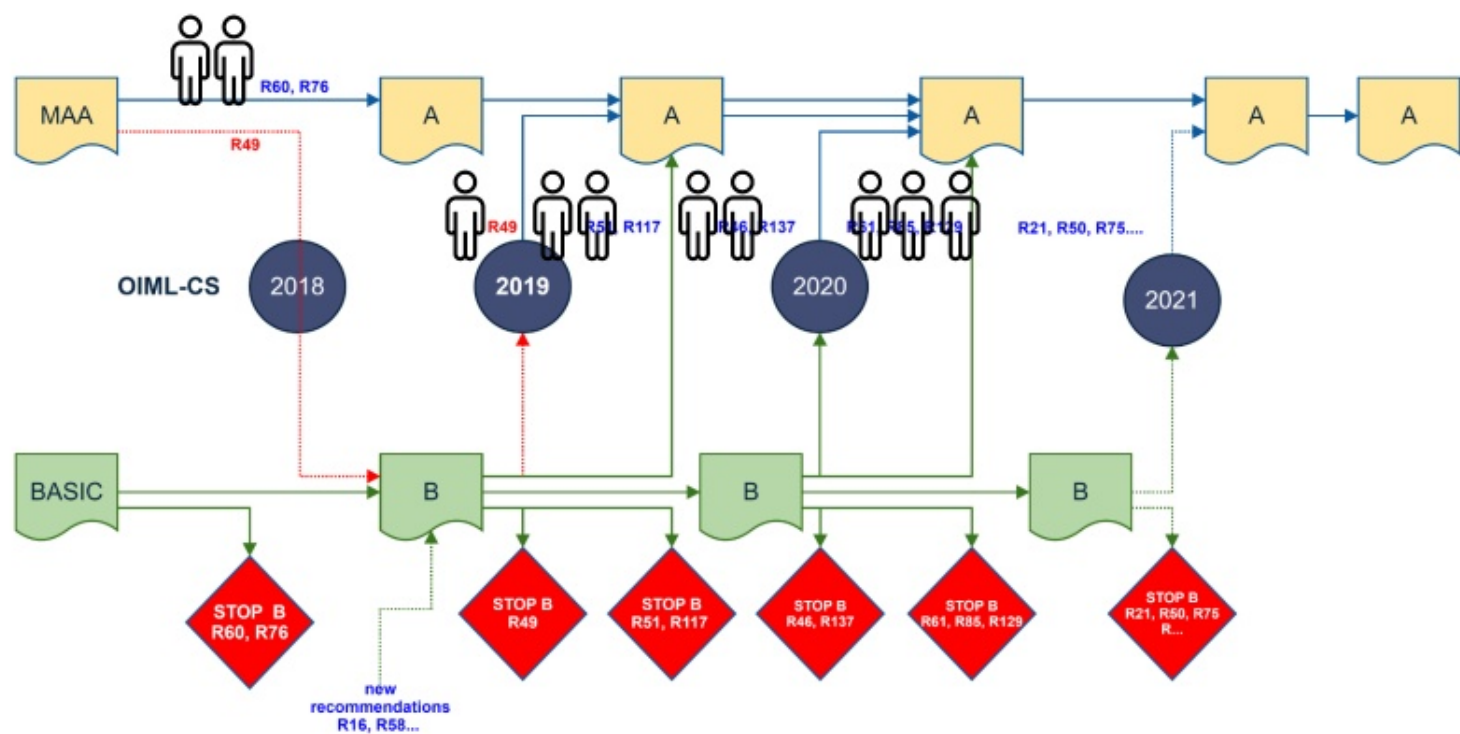




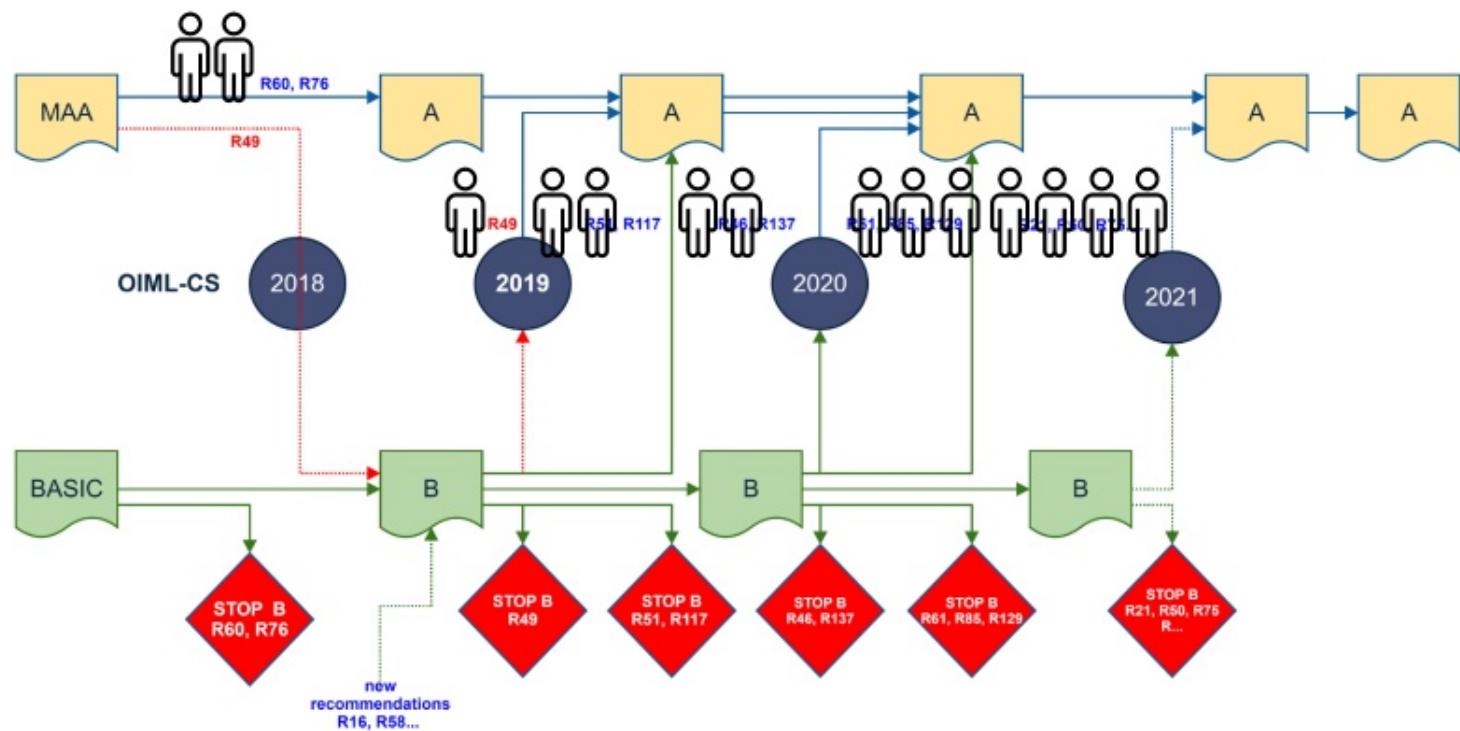
# Involvement of Legal Metrology Experts



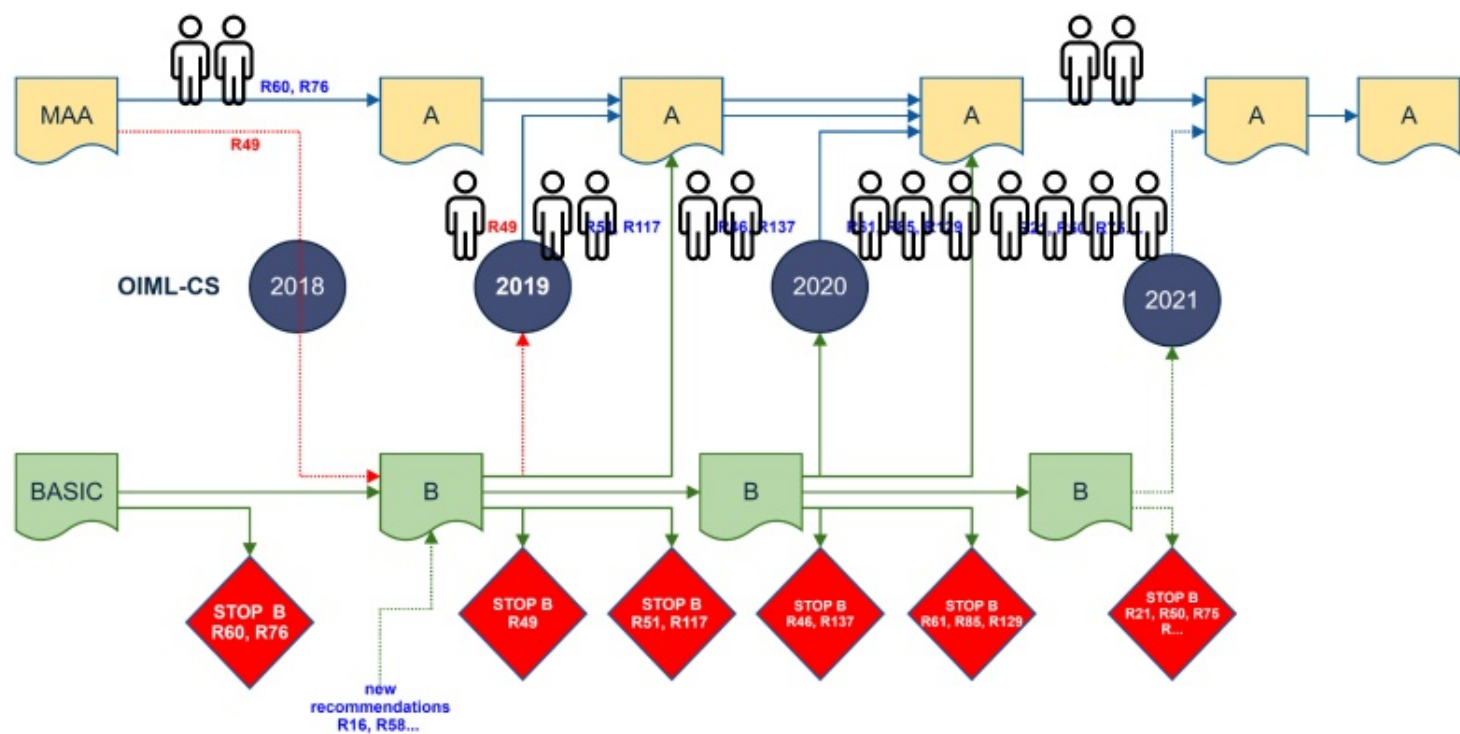
# Involvement of Legal Metrology Experts



# Involvement of Legal Metrology Experts



# Involvement of Legal Metrology Experts



# Assessment Working Group

The IECEx Executive Secretary provided information to the MC on the IECEx processes and procedures for evaluating their certification bodies and test laboratories.

The MC established a working group that should address the differences between the current accreditation and peer assessment process, and should find balance between assessment effort/cost and trustworthiness.



# Liaison IAF

Joint IAF-OIML assessment procedure to support accreditation assessments of IA/TL is under review by IAF for approval

Joint OIML-IECEX Working Group (JWG) is established. It is anticipated that the activities of the JWG will support the work of the MC Assessment Working Group.

# Golden Sample

During the MC meeting, Utilizers indicated their concerns of the "golden sample" during the type-examination. The OIML-CS currently does not provide a system for consistency of production. Member states with limited capabilities (facilities and resources) may encounter difficulties to ensure compliance of products with the type (requirements) when OIML certificates are transferred for national approval.

MC members want to address to the CIML the need of a CTT system under the OIML-CS.

# Implementation of a OIML Certification Mark

## Validity of OIML Certificate

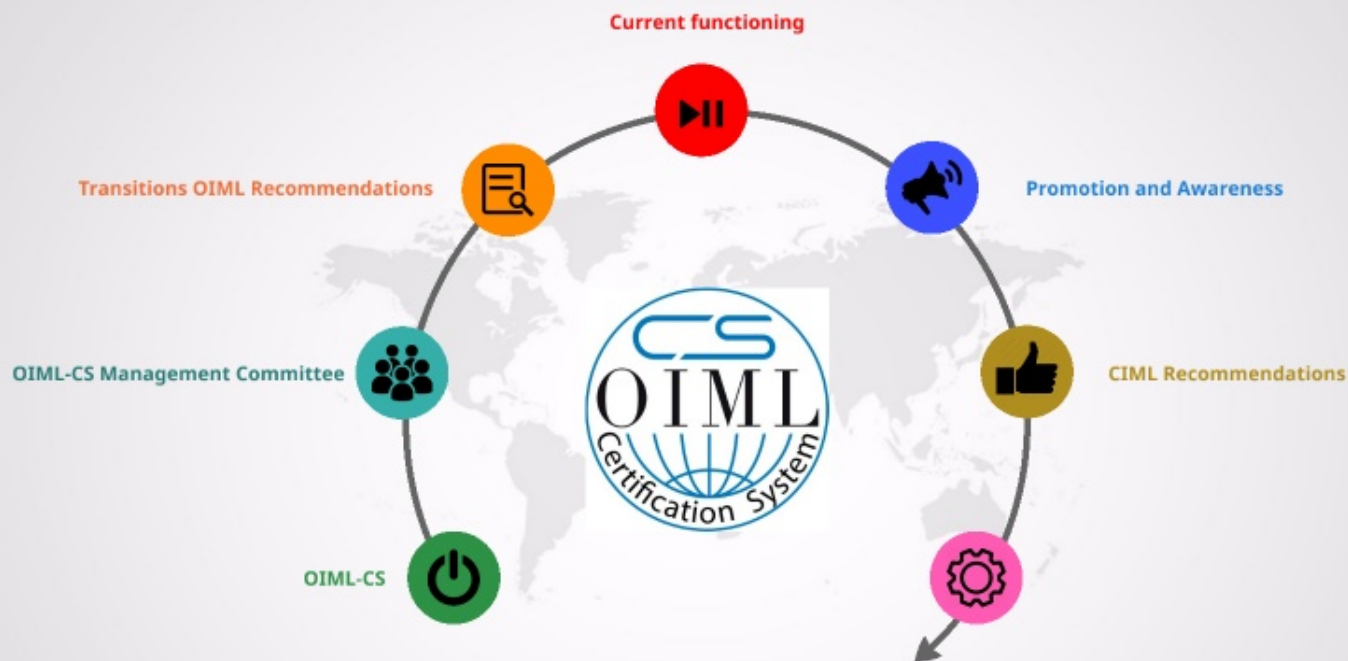
Germany presented a document for the implementation of a OIML-CS certification mark. After discussion among the participants it is agreed that the implementation is linked to the implementation of Conformity to Type into the OIML-CS.

Germany presented a document for the introduction of a expiry date on the certificates. After discussion it is agreed that there is no reason for to limit the validity of the certificates, and is also related to the implementation of a Conformity to Type system into the OIML-CS.



Organisation Internationale de Métrologie Légale

International Organization of Legal Metrology





# Seminars, workshops and awareness raising

Intense promotion was given in 2018 and 2019 by number of people for authorities:

- UNIDO Seminar
- GULFMET Workshop
- WELMEC Committee meeting / EU Working Group Measuring Instruments
- COOMET workshop + meetings
- APLMF workshop





# Initiatives of member states

Superintendence of Colombia took the initiative to promote the OIML-CS to its national authorities, users and manufacturers. Contribution was given by BIML, South Africa, Brazil, Argentina, China and The Netherlands.



# Involvement of manufacturers

Manufacturer associations Aqua, CECOD and CECIP participated in the MC meeting March 2019.

Promotion of the OIML-CS at manufacturers events:

- MeteringChina in Wuxi
- Interweighing China

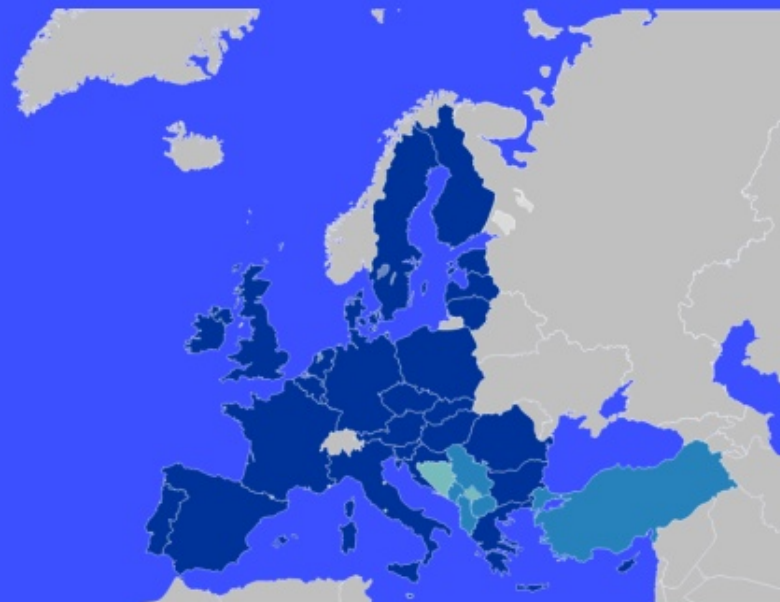


# Promotion and Awareness Raising WG

The MC agreed to establish a Promotion and Awareness Raising Working Group, responsible for identifying promotion activities and develop suitable materials.

# Initiatives

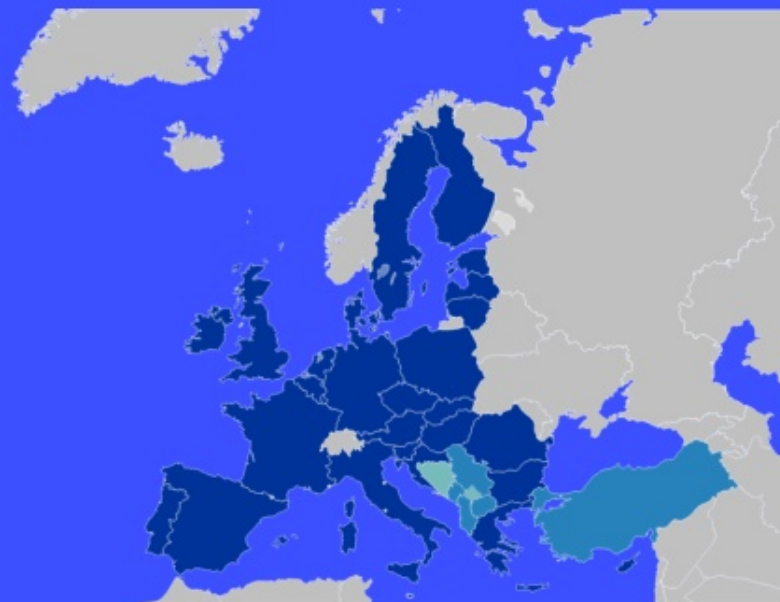
Global awareness raising activities made the OIML-CS successful in a number of regions. Additional support from the member states can make the success greater!



EU directives NAWID and MID have corresponding tables to the OIML Recommendations. 10 out of 30 EU countries participate as Utilizer.

# Initiatives

Global awareness raising activities made the OIML-CS successful in a number of regions. Additional support from the member states can make the success greater!



EU directives NAWID and MID have corresponding tables to the OIML Recommendations. 10 out of 30 EU countries participate as Utilizer.

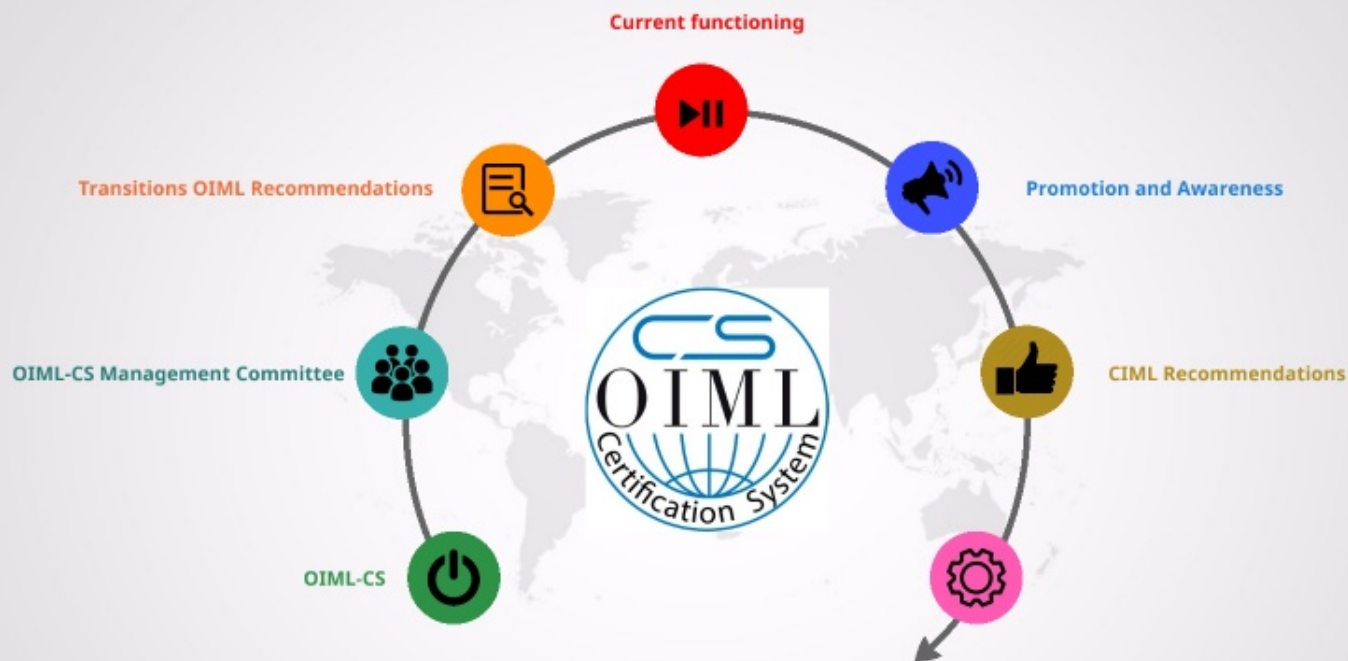






Organisation Internationale de Métrologie Légale


International Organization of Legal Metrology





# Shortcomings identified 2013

- Unsatisfactory **level of acceptance** of OIML MAA Certificates
- Unsatisfactory **level of participation** in the MAA
- Unsatisfactory number (3) of **categories of measuring instruments** / modules after seven years of MAA
- Unsatisfactory **management structures** to handle the MAA and open it for more categories and participants
- **Parallel operation of the MAA and Basic** Certificate Systems confuses stakeholders (one single system desirable)
- Unclear role of **Utilizing Participants**
- Unsatisfactory **awareness** of the MAA and lack of support for potential new Issuing or Utilizing Participants

# Shortcomings identified 2013




- Unsatisfactory **level of acceptance** of OIML MAA Certificates 
- Unsatisfactory **level of participation** in the MAA
- Unsatisfactory number (3) of **categories of measuring instruments** / modules after seven years of MAA
- Unsatisfactory **management structures** to handle the MAA and open it for more categories and participants
- **Parallel operation of the MAA and Basic** Certificate Systems confuses stakeholders (one single system desirable)
- Unclear role of **Utilizing Participants**
- Unsatisfactory **awareness** of the MAA and lack of support for potential new Issuing or Utilizing Participants

# Shortcomings identified 2013

- Unsatisfactory **level of acceptance** of OIML MAA Certificates 
- Unsatisfactory **level of participation** in the MAA 
- Unsatisfactory number (3) of **categories of measuring instruments** / modules after seven years of MAA
- Unsatisfactory **management structures** to handle the MAA and open it for more categories and participants
- **Parallel operation of the MAA and Basic** Certificate Systems confuses stakeholders (one single system desirable)
- Unclear role of **Utilizing Participants**
- Unsatisfactory **awareness** of the MAA and lack of support for potential new Issuing or Utilizing Participants







# Shortcomings identified 2013






- Unsatisfactory **level of acceptance** of OIML MAA Certificates 
- Unsatisfactory **level of participation** in the MAA 
- Unsatisfactory number (3) of **categories of measuring instruments** / modules after seven years of MAA 
- Unsatisfactory **management structures** to handle the MAA and open it for more categories and participants
- **Parallel operation of the MAA and Basic** Certificate Systems confuses stakeholders (one single system desirable)
- Unclear role of **Utilizing Participants**
- Unsatisfactory **awareness** of the MAA and lack of support for potential new Issuing or Utilizing Participants






# Shortcomings identified 2013

- Unsatisfactory **level of acceptance** of OIML MAA Certificates 
- Unsatisfactory **level of participation** in the MAA 
- Unsatisfactory number (3) of **categories of measuring instruments** / modules after seven years of MAA 
- Unsatisfactory **management structures** to handle the MAA and open it for more categories and participants 
- **Parallel operation of the MAA and Basic** Certificate Systems confuses stakeholders (one single system desirable)
- Unclear role of **Utilizing Participants**
- Unsatisfactory **awareness** of the MAA and lack of support for potential new Issuing or Utilizing Participants

# Shortcomings identified 2013




- Unsatisfactory **level of acceptance** of OIML MAA Certificates 
- Unsatisfactory **level of participation** in the MAA 
- Unsatisfactory number (3) of **categories of measuring instruments** / modules after seven years of MAA 
- Unsatisfactory **management structures** to handle the MAA and open it for more categories and participants 
- **Parallel operation of the MAA and Basic** Certificate Systems confuses stakeholders (one single system desirable) 
- Unclear role of **Utilizing Participants**
- Unsatisfactory **awareness** of the MAA and lack of support for potential new Issuing or Utilizing Participants

# Shortcomings identified 2013

- Unsatisfactory **level of acceptance** of OIML MAA Certificates 
- Unsatisfactory **level of participation** in the MAA 
- Unsatisfactory number (3) of **categories of measuring instruments** / modules after seven years of MAA 
- Unsatisfactory **management structures** to handle the MAA and open it for more categories and participants 
- **Parallel operation of the MAA and Basic** Certificate Systems confuses stakeholders (one single system desirable) 
- Unclear role of **Utilizing Participants** 
- Unsatisfactory **awareness** of the MAA and lack of support for potential new Issuing or Utilizing Participants



# Shortcomings identified 2013

- Unsatisfactory **level of acceptance** of OIML MAA Certificates 
- Unsatisfactory **level of participation** in the MAA 
- Unsatisfactory number (3) of **categories of measuring instruments** / modules after seven years of MAA 
- Unsatisfactory **management structures** to handle the MAA and open it for more categories and participants 
- **Parallel operation of the MAA and Basic** Certificate Systems confuses stakeholders (one single system desirable) 
- Unclear role of **Utilizing Participants** 
- Unsatisfactory **awareness** of the MAA and lack of support for potential new Issuing or Utilizing Participants 

# Improvements for the OIML-CS

There is the need of a Conformity to Type system within the OIML-CS to resolve the worries of the "golden sample".

A review of the current assessment procedure for IA/TL should look for a balance between costs and trustworthy.

The MC will be involved in prioritizing the project for revision of recommendation, and meet the needs of the users of measuring instruments.

Further support is needed from the CIML members by participating in the OIML-CS (development of recommendations, utilization of certificates and provision of experts)



# CIML Recommendations

No CIML recommendations are currently made by the MC

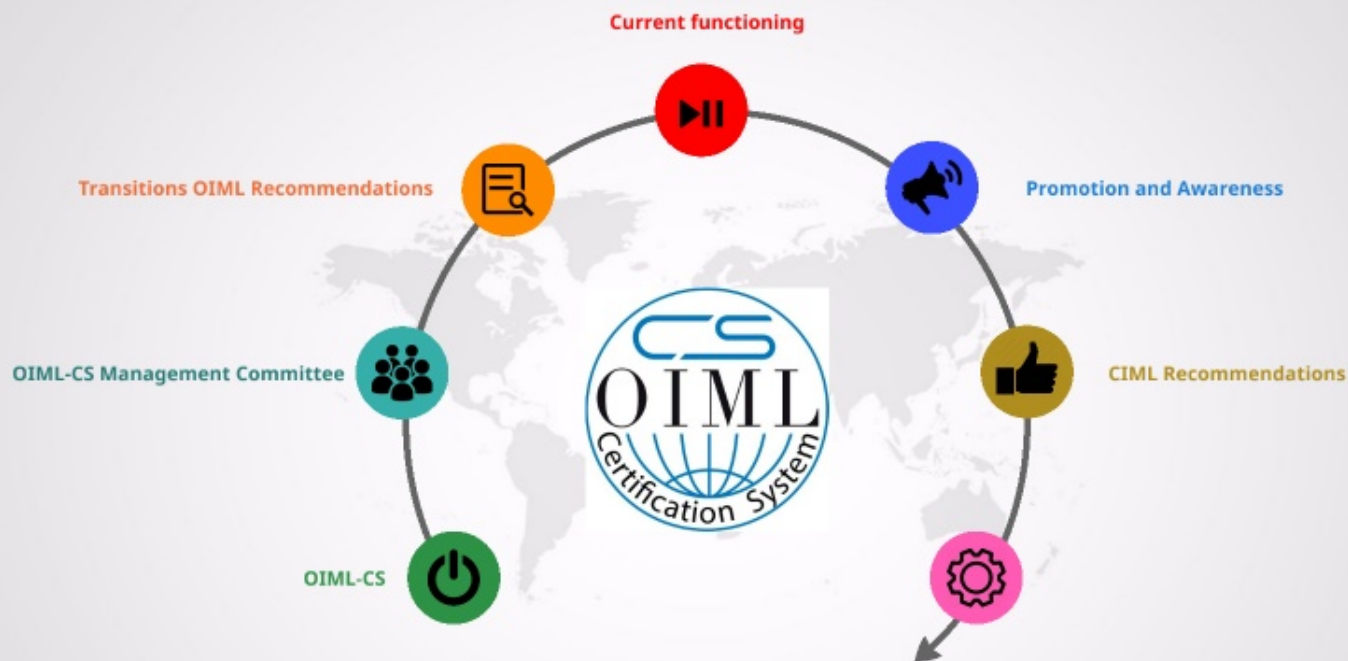
**Next OIML-CS Management Committee meeting  
week of 16 March 2020, New Delhi, India**





Organisation Internationale de Métrologie Légale

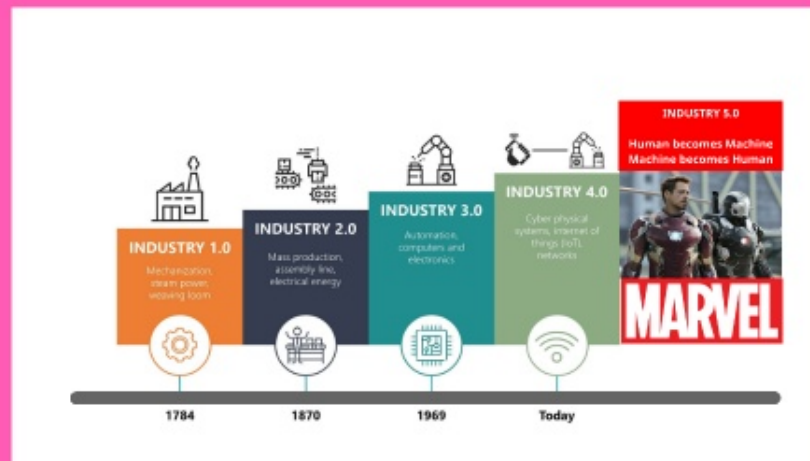
International Organization of Legal Metrology

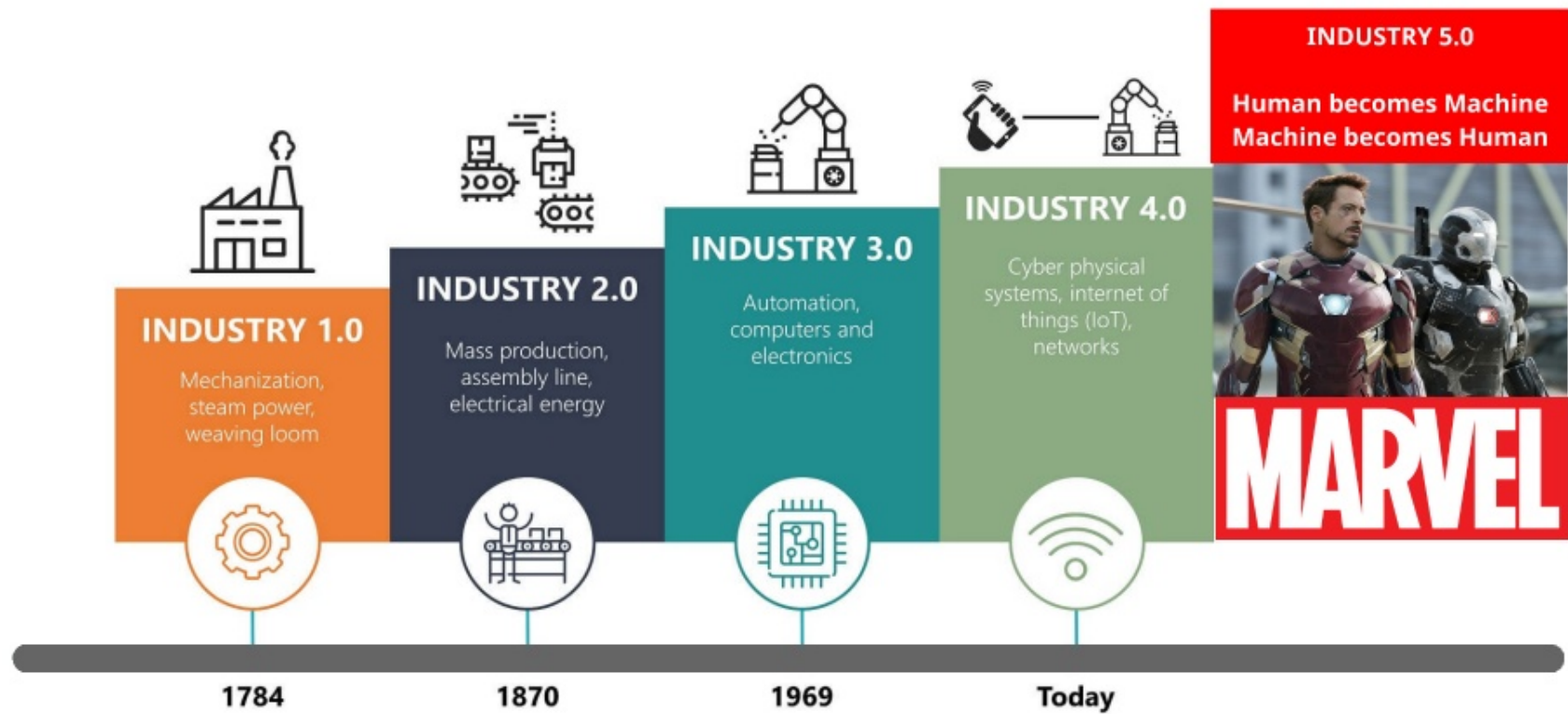


# Rapid technological development

OIML R46: EU directive for balancing the electricity grid. Energy meter will be able to switch every 15 minutes from provider, and to switch IoT on / off.

OIML R91: Introduction of self driving cars





# OIML R117

metering tiny flows







# OIML R117

metering tiny flows





Organisation Internationale de Métrologie Légale

International Organization of Legal Metrology

